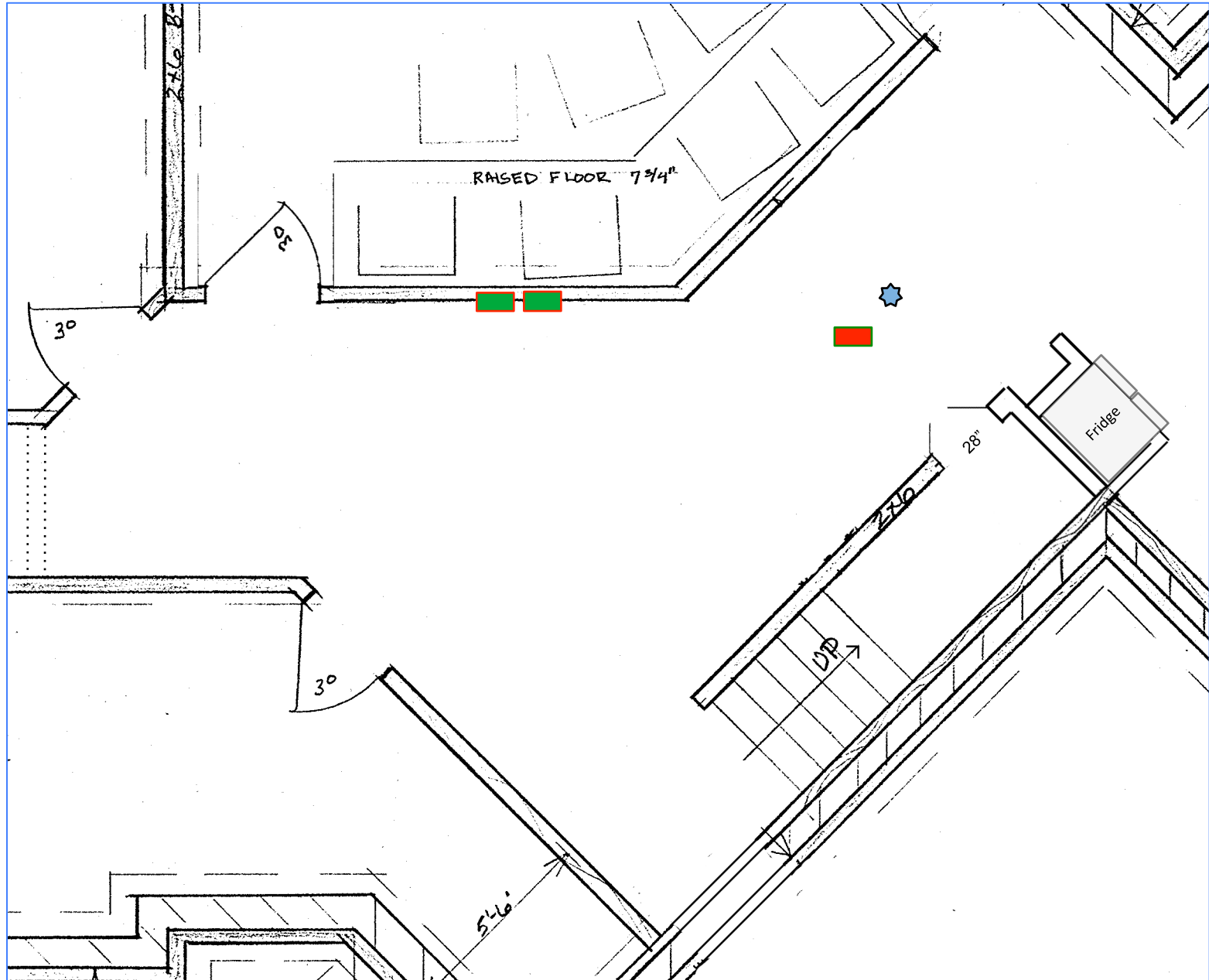


Floor Plan



93" Ceiling Height

15" Wall Height

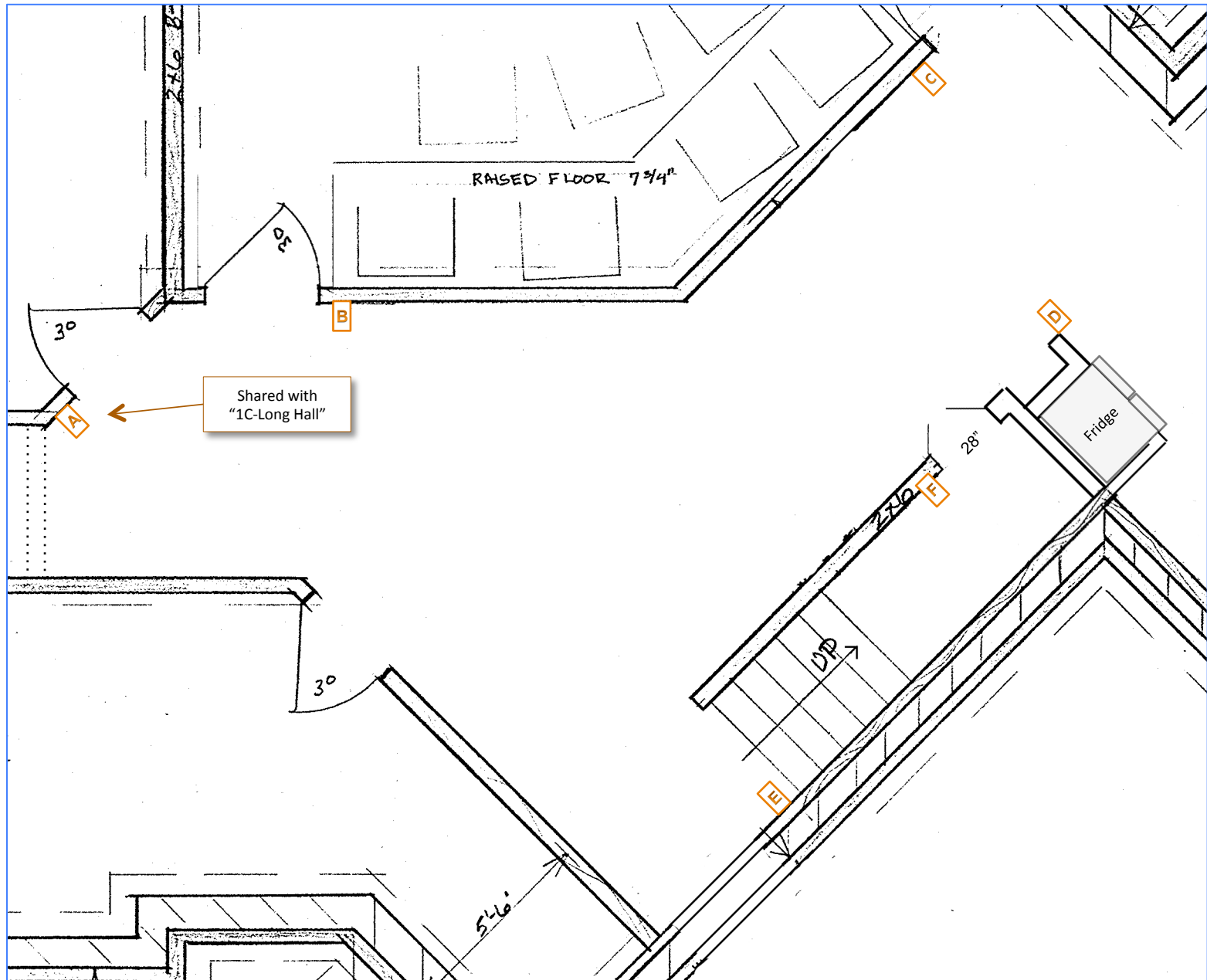
Scale: 4' per inch



HVAC Locations

-  = Supply Air Duct
-  = Return Air Duct

Scale: 4' per inch

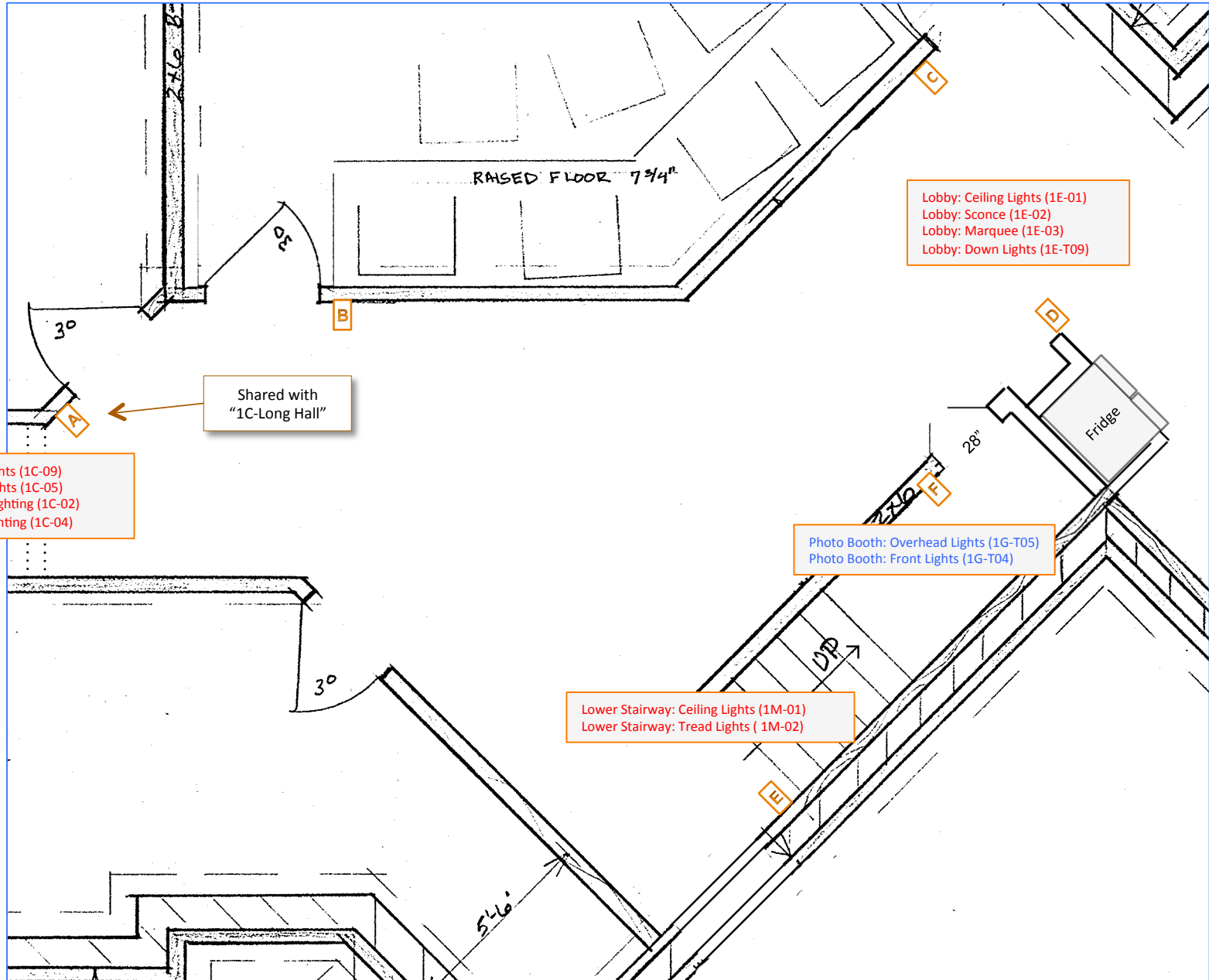


Shared with
"1C-Long Hall"

X = Switch Cluster X = Standard Switch

Scale: 4' per inch

Lighting Controls



Long Hall: Ceiling Lights (1C-09)
 Long Hall: Accent Lights (1C-05)
 Long Hall: Cabinet Lighting (1C-02)
 Long Hall: Crown Lighting (1C-04)



Shared with
 "1C-Long Hall"

Lobby: Ceiling Lights (1E-01)
 Lobby: Sconce (1E-02)
 Lobby: Marquee (1E-03)
 Lobby: Down Lights (1E-T09)

Photo Booth: Overhead Lights (1G-T05)
 Photo Booth: Front Lights (1G-T04)

Lower Stairway: Ceiling Lights (1M-01)
 Lower Stairway: Tread Lights (1M-02)

Lighting Control Detail

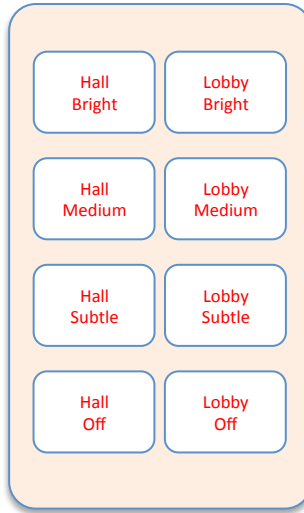
 = Switch Cluster  = Standard Switch

Scale: 4' per inch

1E - Lobby

Lighting Keypads 1

Keypad Location 1E-A Lobby, Long Hall Entry



Lobby: Ceiling Lights (1E-01)
Lobby: Sconce (1E-02)
Lobby: Marquee (1E-03)

Long Hall: Ceiling Lights (1C-09)
Long Hall: Accent Lights (1C-05)
Long Hall: Cabinet Lighting (1C-02)
Long Hall: Crown Lighting (1C-04)

Cables
2 – White

Keypad Location 1E-B Lobby, Theater, South



Lobby: Ceiling Lights (1E-01)
Lobby: Sconce (1E-02)
Lobby: Marquee (1E-03)
Lobby: Down Lights (1E-T09)

Cables
2 – White

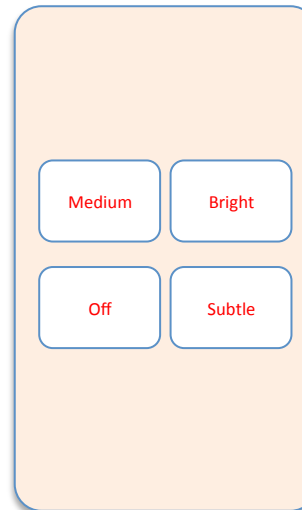
Keypad Location 1E-C Lobby, Theater, North



Lobby: Ceiling Lights (1E-01)
Lobby: Sconce (1E-02)
Lobby: Down Lights (1E-T09)

Cables
1 - White

Keypad Location 1E-D Lobby, Lounge Entry



Lobby: Ceiling Lights (1E-01)
Lobby: Sconce (1E-02)
Lobby: Down Lights (1E-T09)

Cables
1 - White

Keypad Location 1E-E Lower Stairs, East Wall



Lobby: Ceiling Lights (1E-01)
 Lobby: Sconce (1E-02)
 Lobby: Marquee (1E-03)

Lower Stairway: Ceiling Lights (1M-01)
 Lower Stairway: Tread Lights (1M-02)

Cables
 1 – White

Keypad Location 1E-F Photo Booth

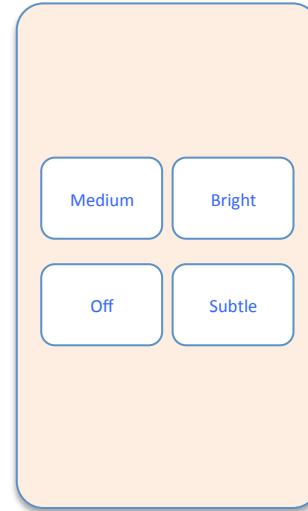
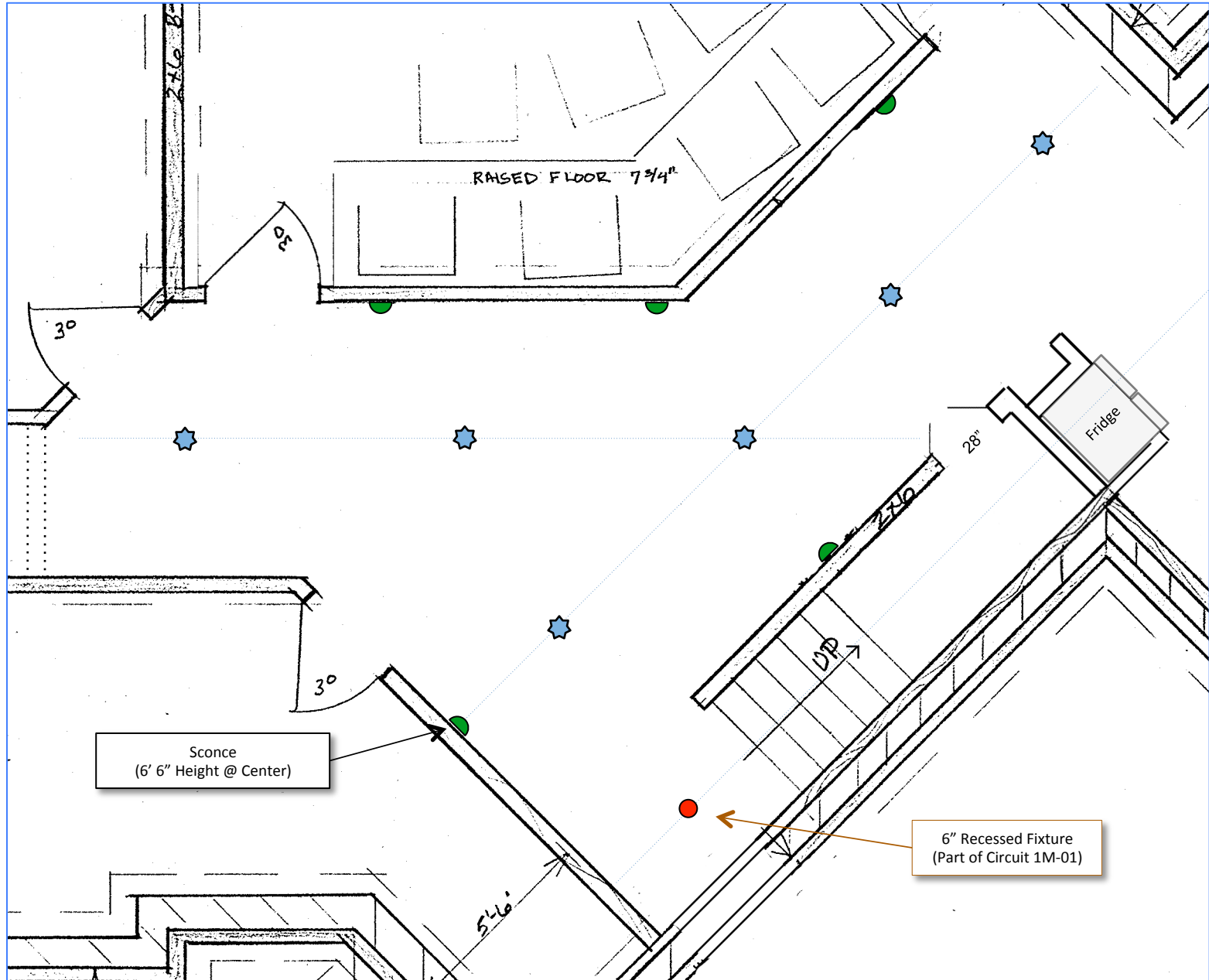


Photo Booth: Overhead Lights (1G-T05)
 Photo Booth: Front Lights (1G-T04)

Cables
 1 – Blue




Lighting 1


Scale: 4' per inch





Lighting 2

Scale: 4' per inch


 = Sconce (78" Ht.) (1E-02)


 = Surface Fixture (1E-01)

 = Recessed Fixture (1M-01)

 = Down lights (24x LED Puck) (1E-T09)

 = Standby Light

 = Booth Overhead (4x LED Puck) (1G-T05)

 = Booth Front Lighting (4x 2.5' LED = 10 lin ft) (1G-T04)

Spare = Photo Booth Front Lighting (1E-10)

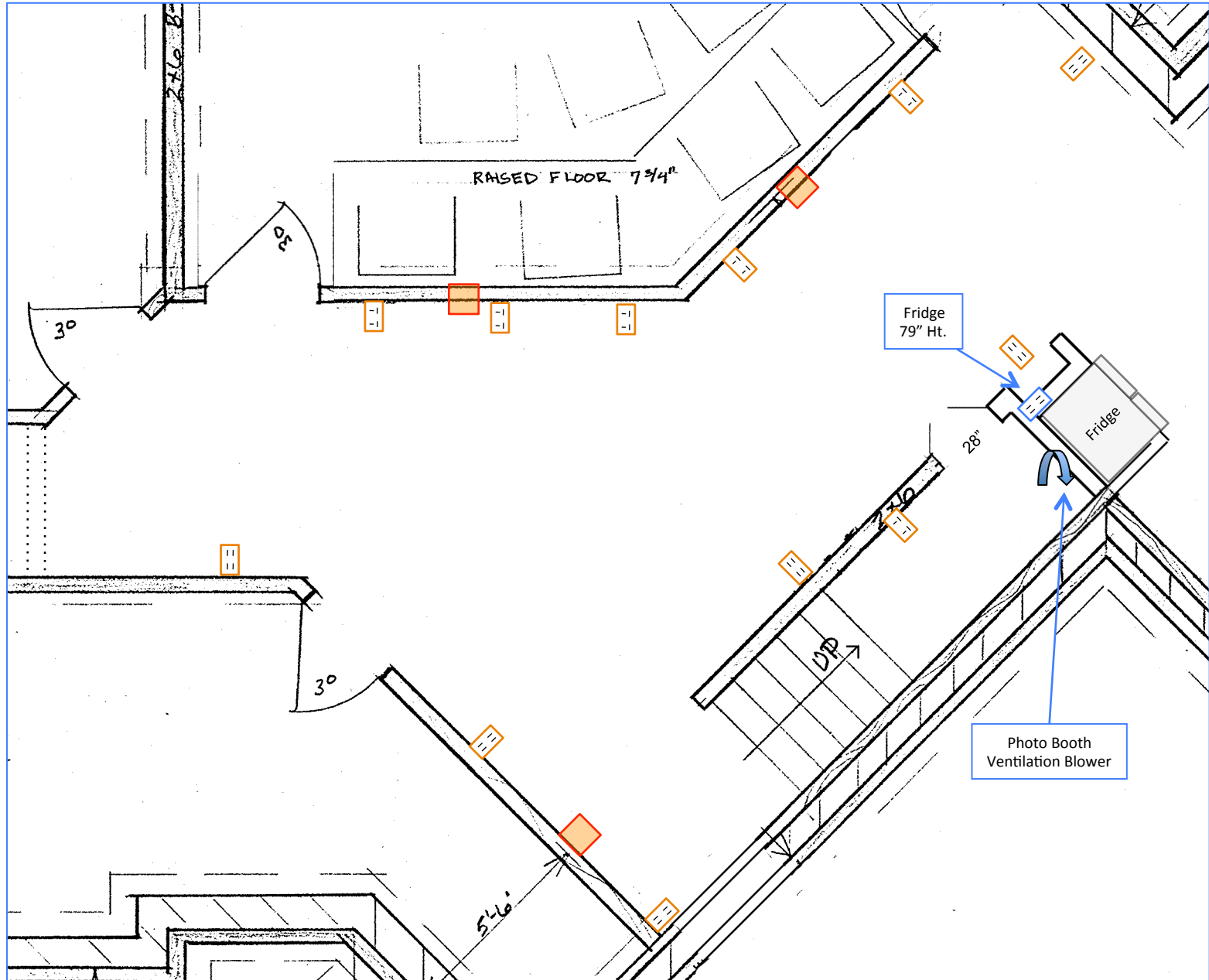
Changes From Previous Layout

1E-09 (Photo Booth: Overhead Lights) becomes 1E-T09 (Lobby: Down Lights)




1E-10 (Photo Booth: Front Lights) becomes **Spare**

1G-T04 (Lounge Bar: Crown Lighting) becomes 1G-T04 (Booth Front Lighting)

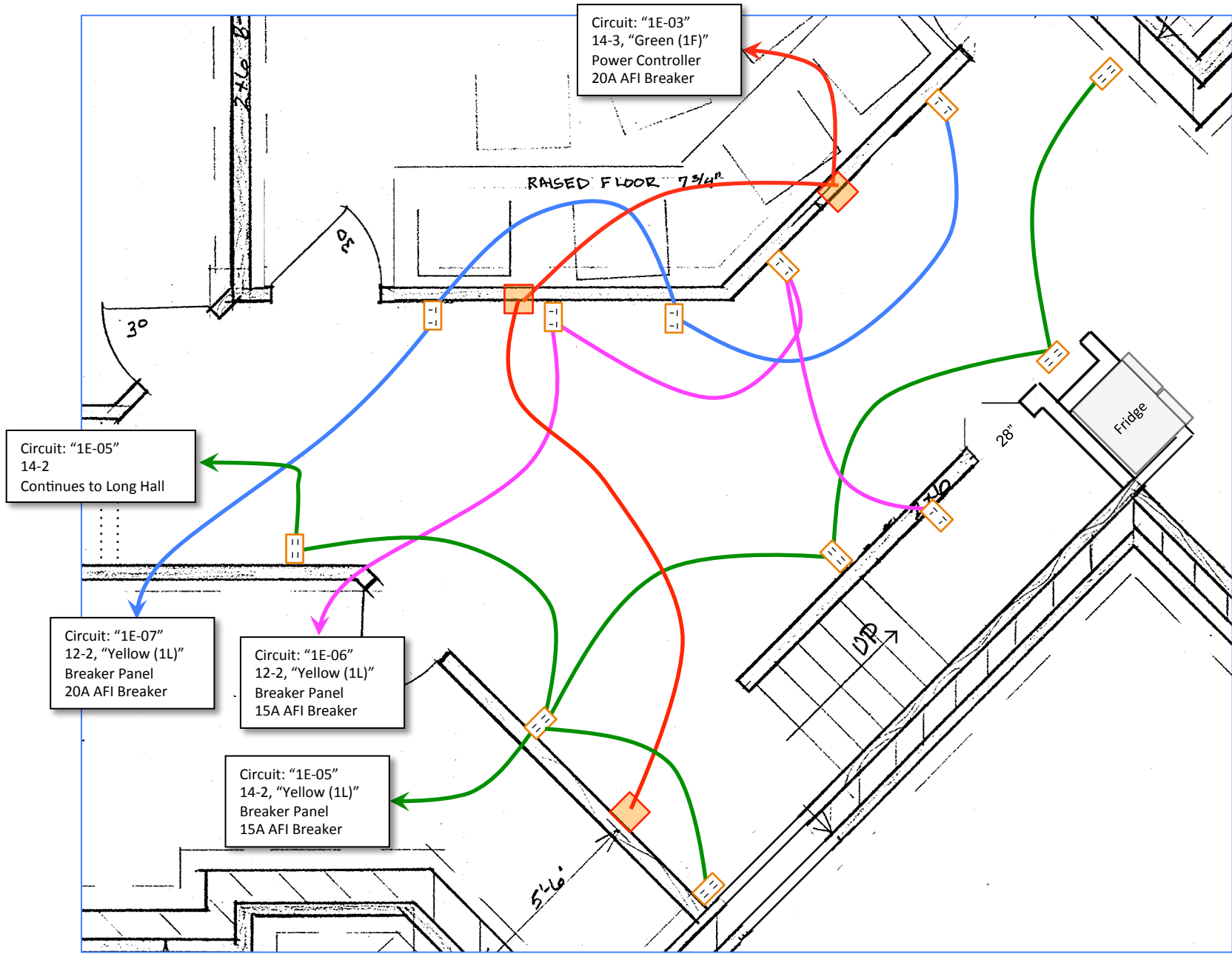
1G-T05 (Lounge Bar: Cabinet Interior) becomes 1G-T05 (Both: Overhead Lighting)



Power

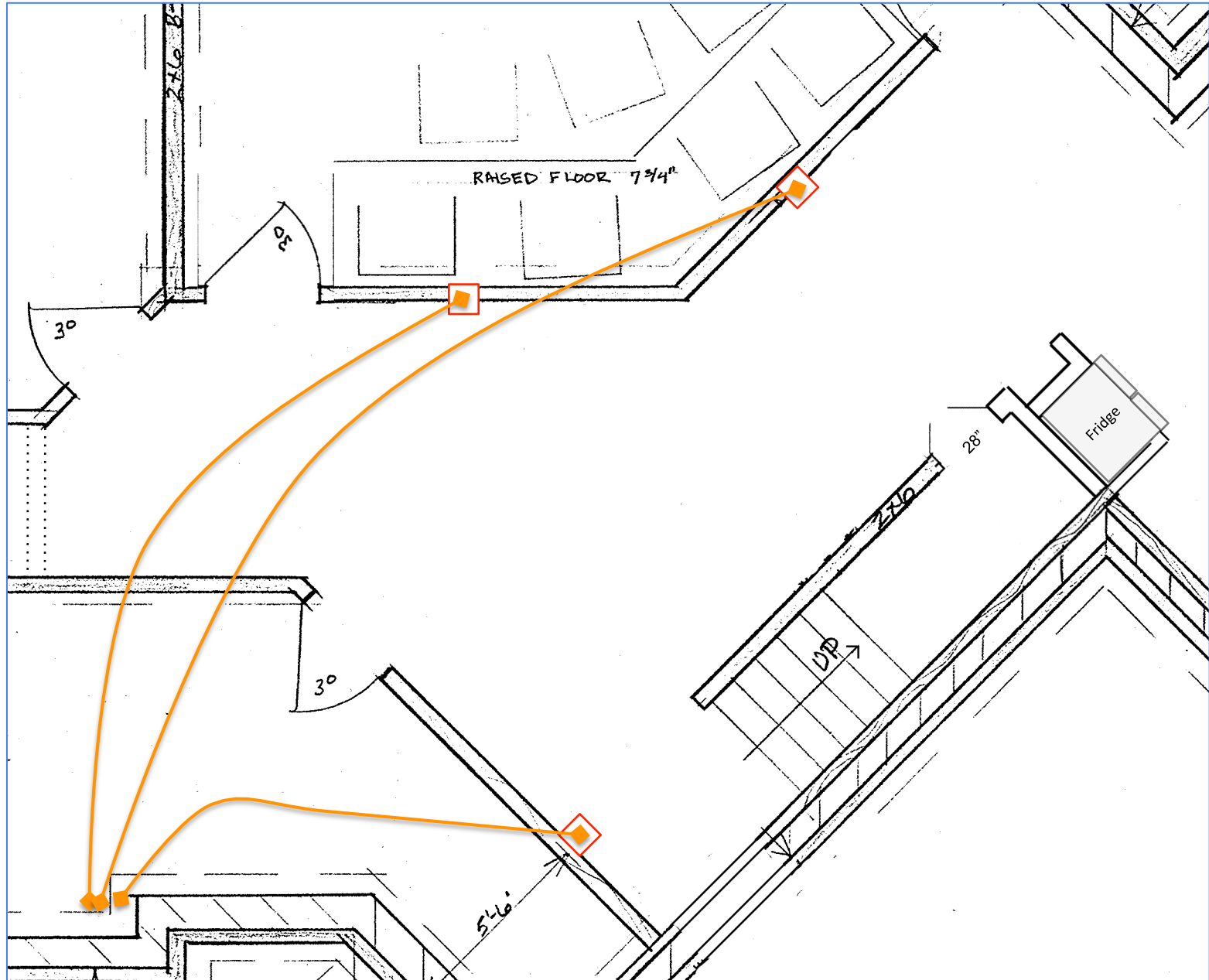
-  = 15A Duplex / LAN / Phone
-  = 15A Duplex
-  = 20A Duplex
-  = 15A Duplex (Concealed)
-  = Double-Gang Box (78" height @ center)
15A Service 14-3 (1/2 switched)
(Shares Conduit to Utility Room)

Scale: 4' per inch



- = 15A Duplex / LAN / Phone
- = 15A Duplex
- = 20A Duplex
- = 15A Duplex (Concealed)
- = Double-Gang Box (78" height @ center) 15A Service 14-3 (1/2 switched) (Shares Conduit to Utility Room)

Scale: 4' per inch

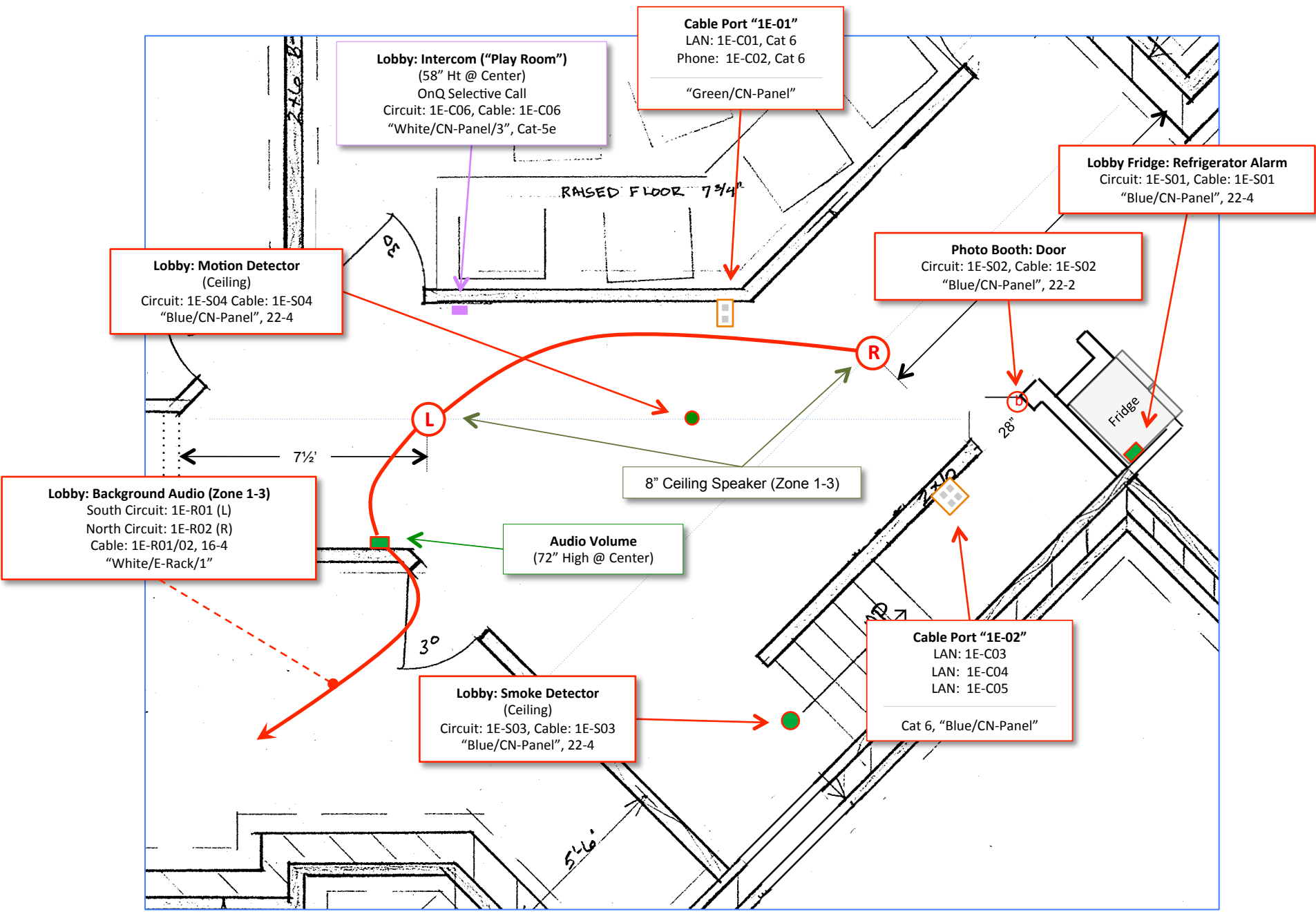


Conduit Runs

— = 1 1/2" Plastic Conduit

□ = Double-Gang Box (78" height @ center)
(Box shared with power)

Scale: 4' per inch



Scale: 4' per inch

