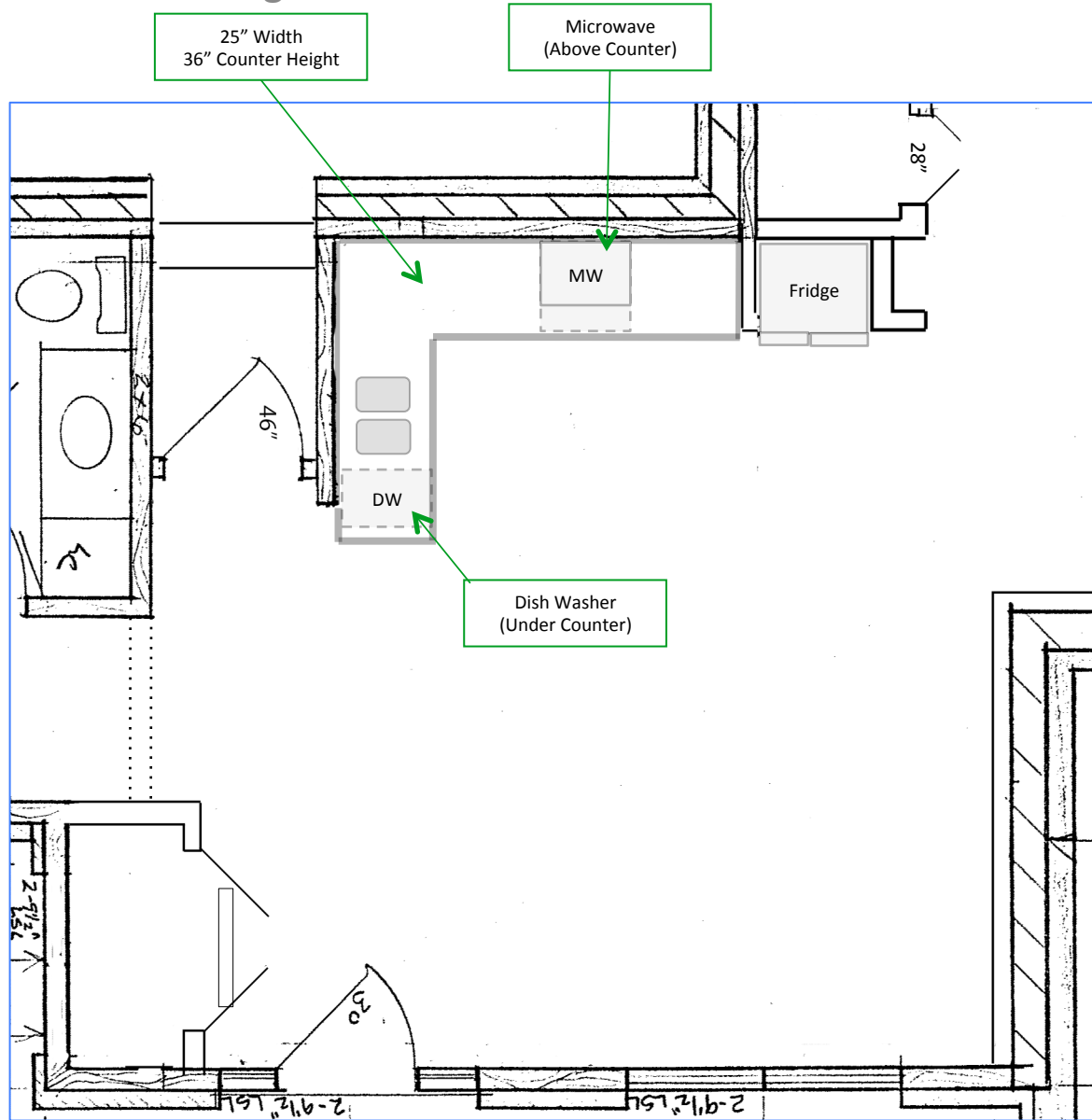


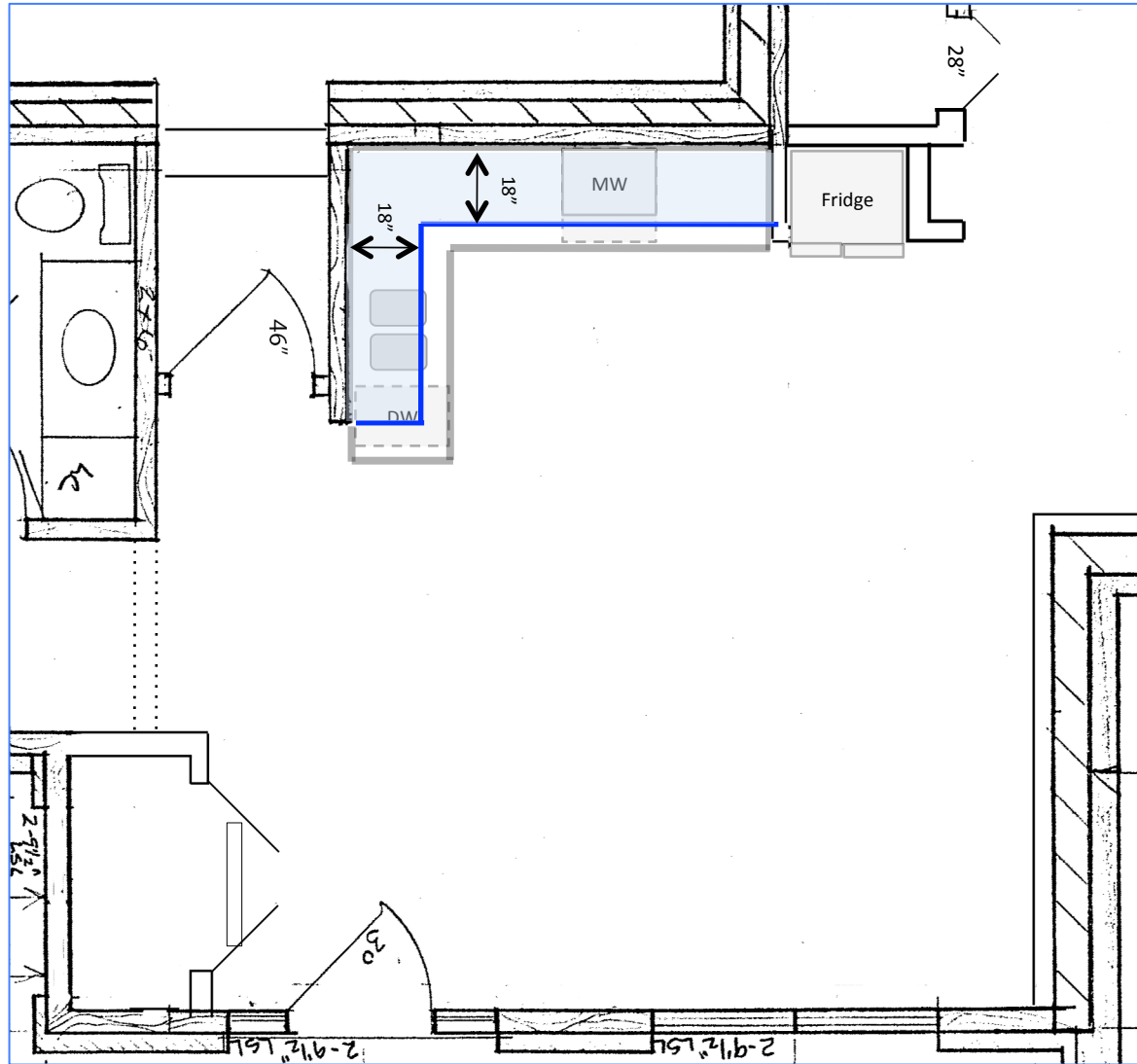
Floor Plan

Scale: 4' per inch

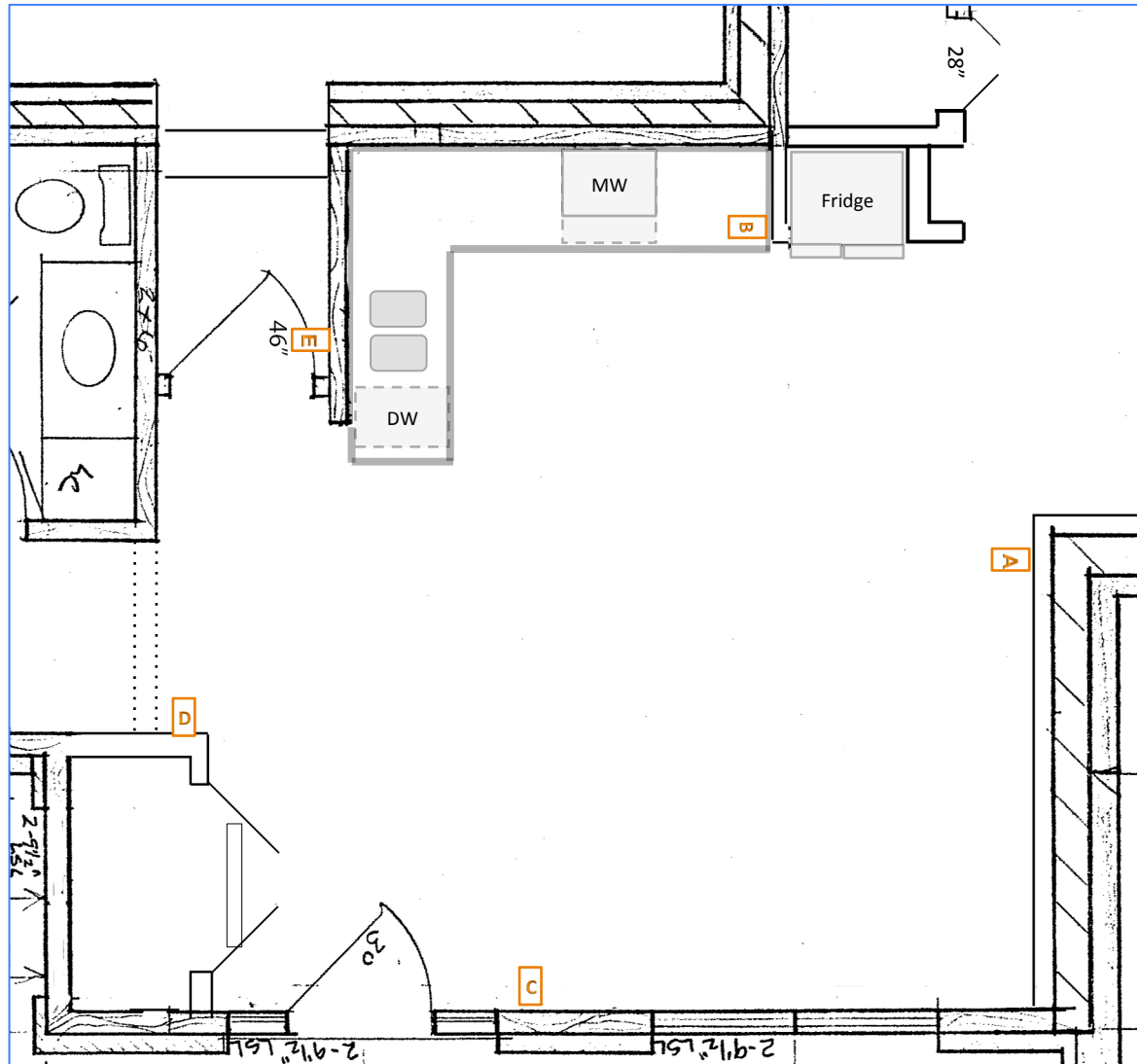


Counter Dimensions

Scale: 4' per inch



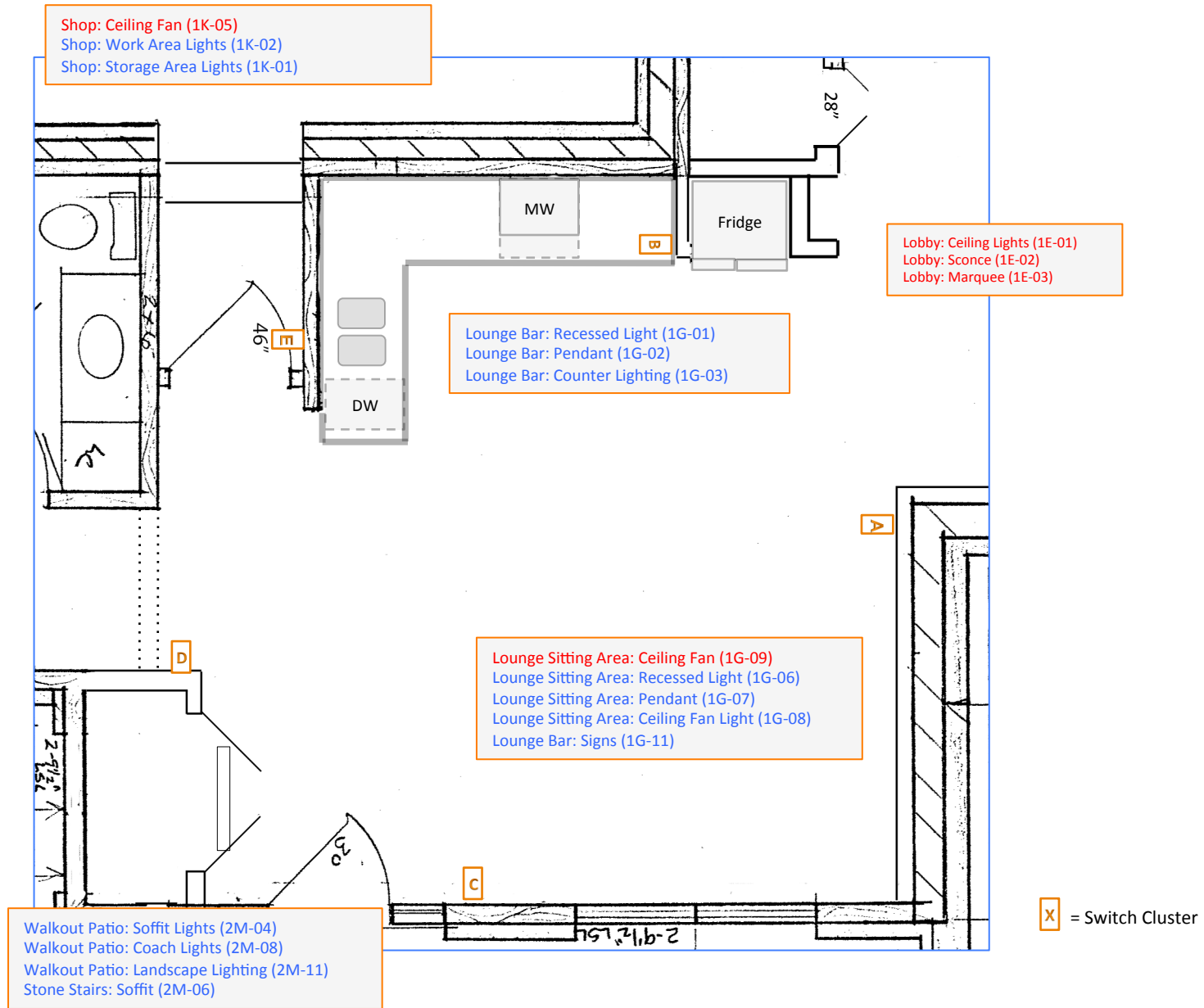
Scale: 4' per inch



Lighting Controls

 = Switch Cluster

Scale: 4' per inch



Lighting Controls

Scale: 4' per inch

## Keypad Location 1G-A (L&R) Lounge, West Entry



Lounge Sitting Area: Ceiling Fan (1G-09)  
 Lounge Sitting Area: Recessed Light (1G-06)  
 Lounge Sitting Area: Pendant (1G-07)  
 Lounge Sitting Area: Ceiling Fan Light (1G-08)  
 Lounge Bar: Signs (1G-11)

Cables  
2 - Blue

## Keypad Location 1G-B Lounge Counter



Lounge Bar: Recessed Light (1G-01)  
 Lounge Bar: Pendant (1G-02)  
 Lounge Bar: Counter Lighting (1G-03)

Cables  
2 - Blue

## Keypad Location 1G-C Lounge, Entry Door



Lounge Sitting Area: Ceiling Fan (1G-09)  
 Lounge Sitting Area: Recessed Light (1G-06)  
 Lounge Sitting Area: Pendant (1G-07)  
 Lounge Sitting Area: Ceiling Fan Light (1G-08)  
 Lounge Bar: Signs (1G-11)

Walkout Patio: Soffit Lights (2M-04)  
 Walkout Patio: Coach Lights (2M-08)  
 Walkout Patio: Landscape Lighting (2M-11)  
 Stone Stairs: Soffit (2M-06)

Cables  
2 - Blue

## Keypad Location 1G-D Lounge Entry, Near Changing Room



Lounge Sitting Area: Ceiling Fan (1G-09)  
 Lounge Sitting Area: Recessed Light (1G-06)  
 Lounge Sitting Area: Pendant (1G-07)  
 Lounge Sitting Area: Ceiling Fan Light (1G-08)  
 Lounge Bar: Signs (1G-11)

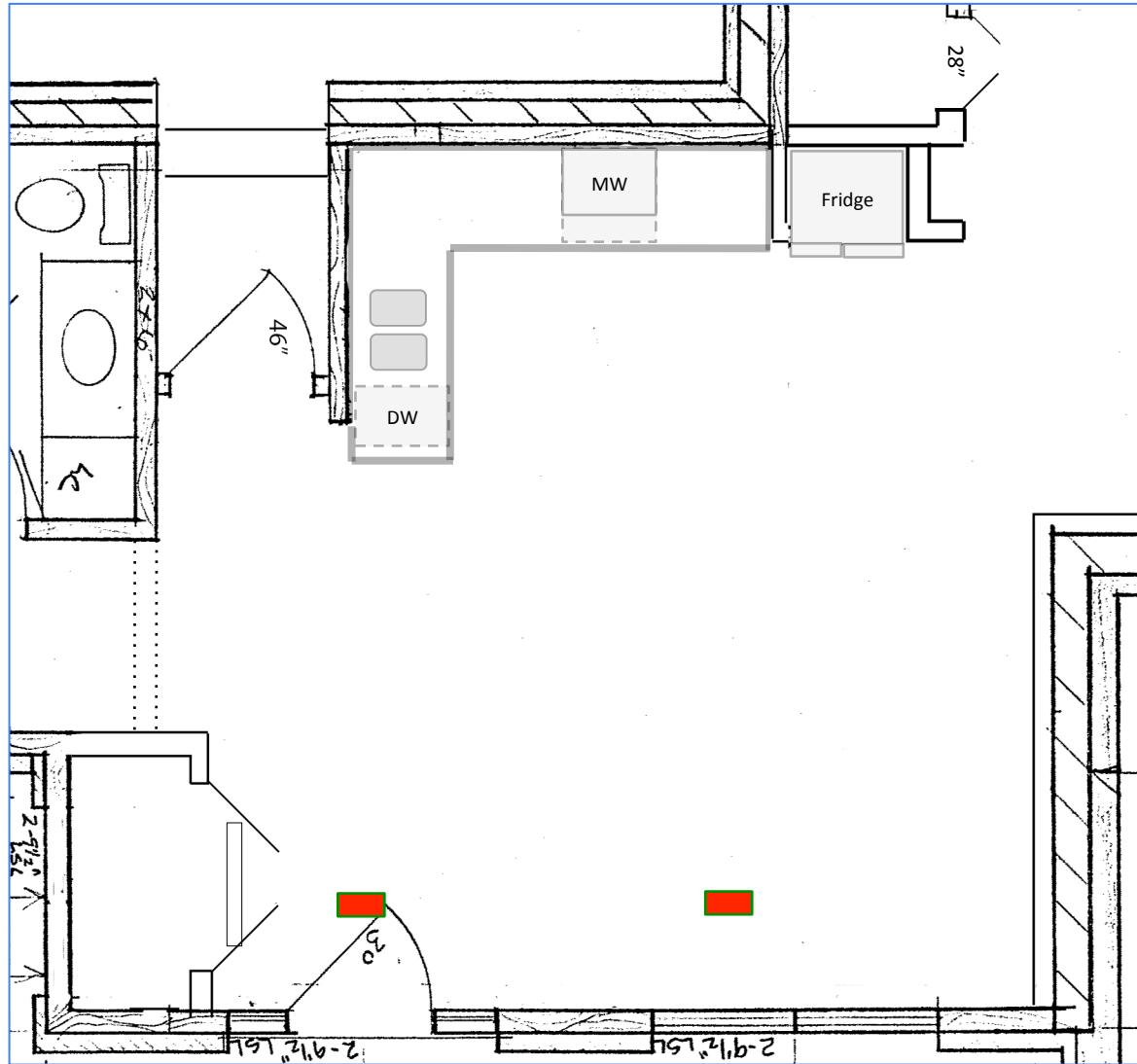
Cables  
2 - Blue

## Keypad Location 1G-E Shop, Lounge Hall





Shop: Ceiling Fan (1K-05)  
Shop: Work Area Lights (1K-02)  
Shop: Storage Area Lights (1K-01)

Cables  
1 – Blue

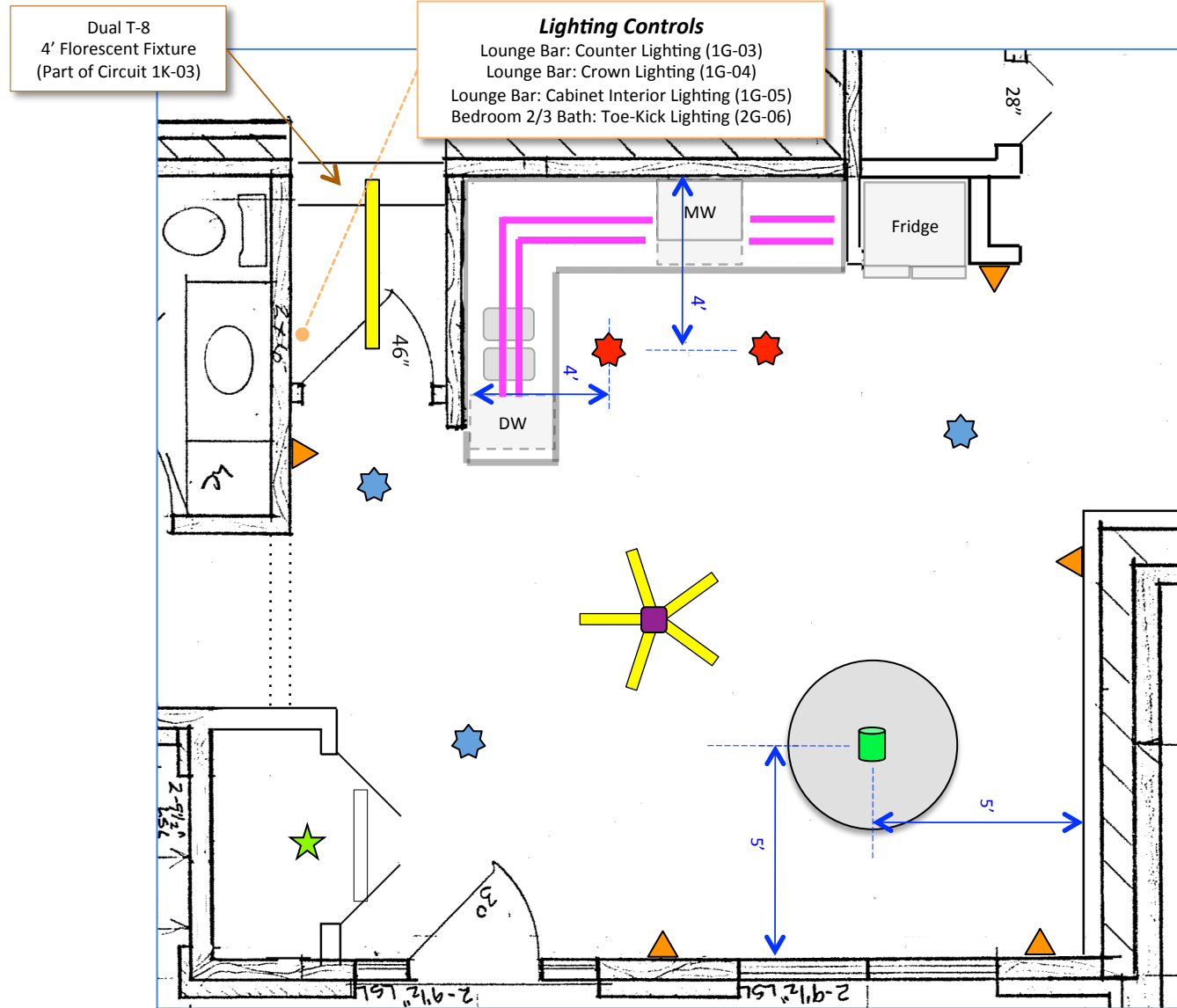


HVAC Duct Locations

-  = Supply Air Duct
-  = Return Air Duct

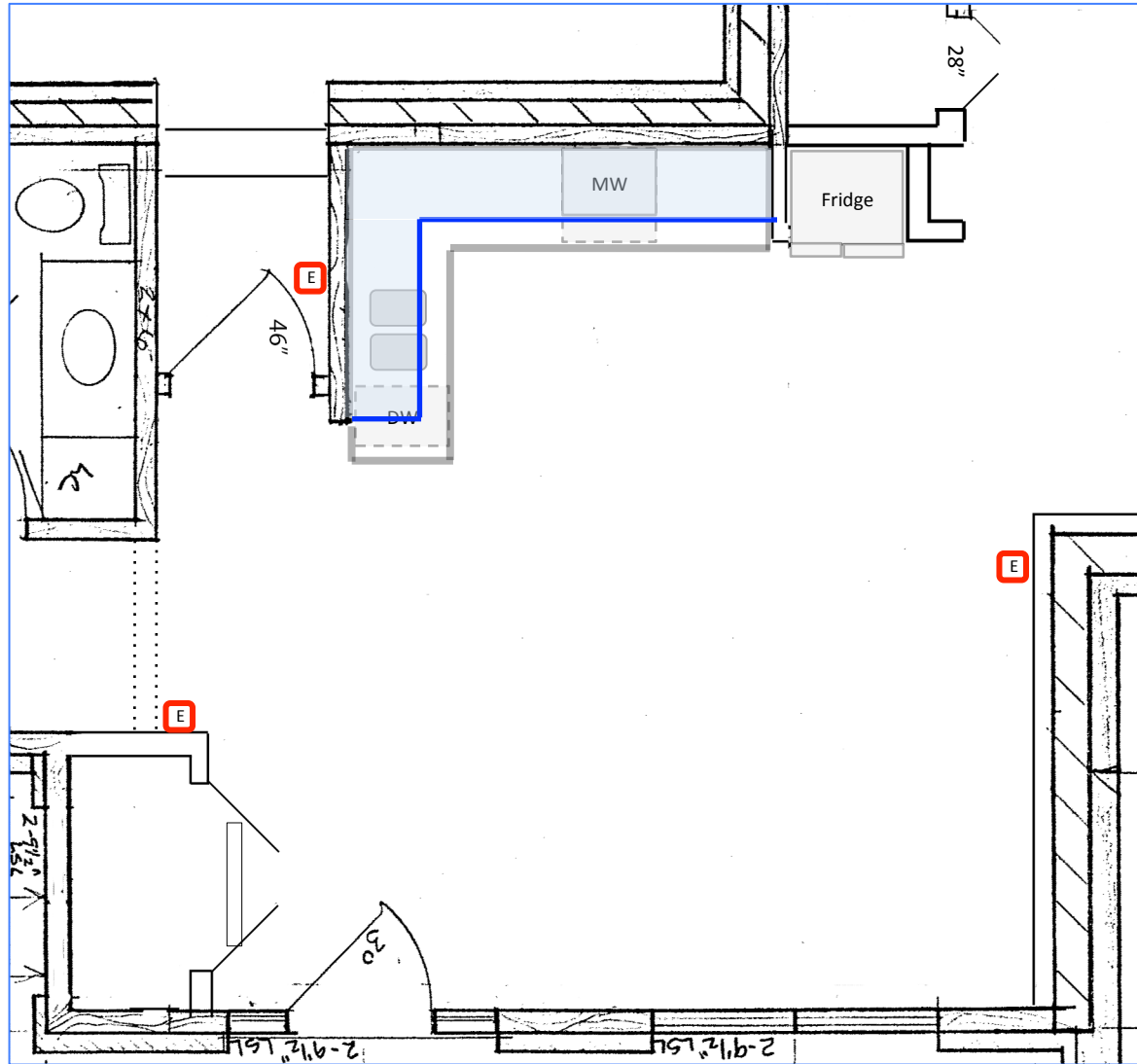
Scale: 4' per inch





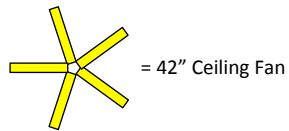
Lighting 1


Scale: 4' per inch





Lighting 2


Scale: 4' per inch




 = Surface Fixture (1G-06)


 = Surface Fixture (1G-01)

 = Pendant (1G-07)

 = Sconce (1G-02)

 = Counter Lighting (~18') (1G-03)

 = Fan Light (1G-08)

 = Closet Lighting (1G-10)

 = Standby Light

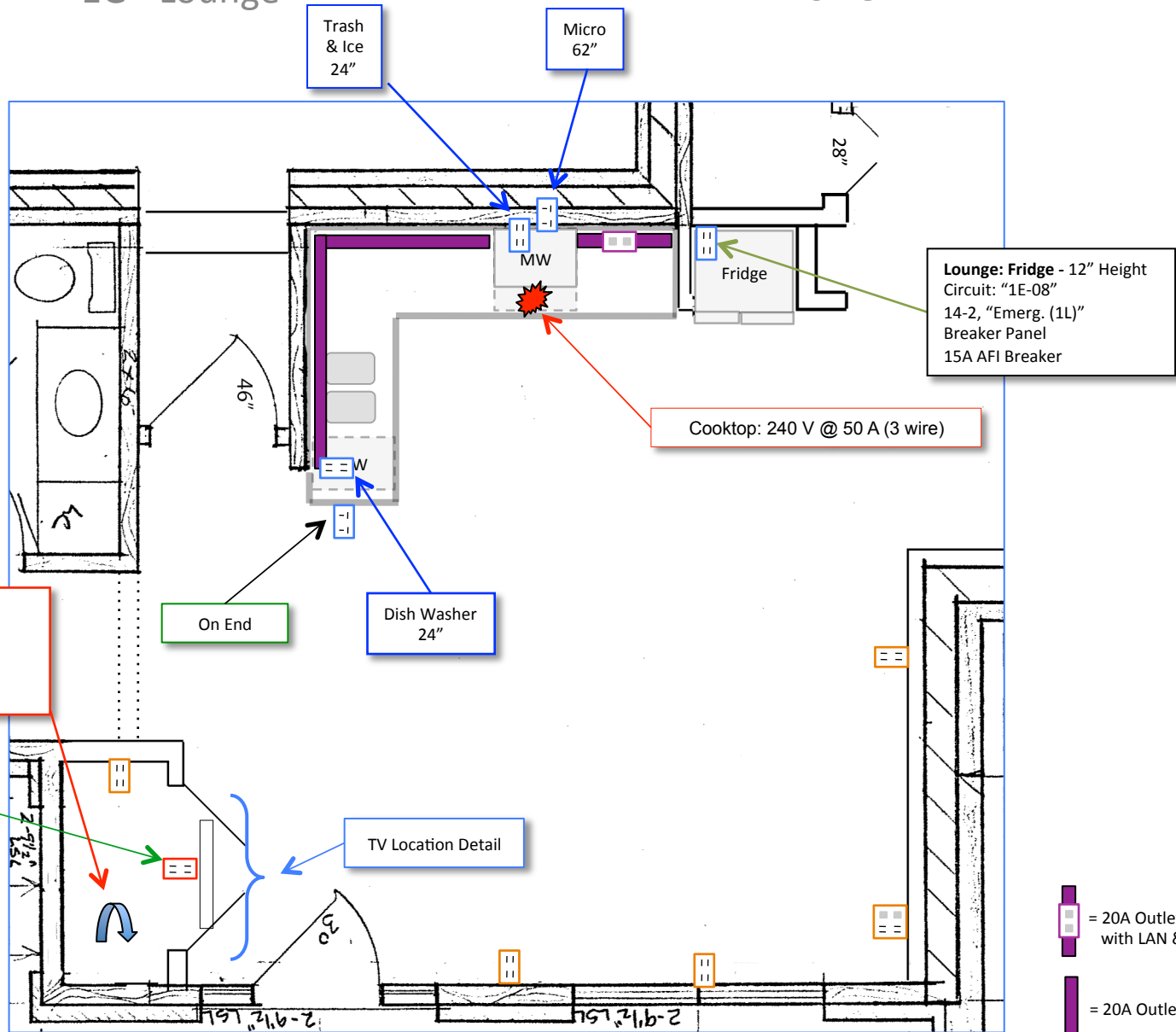
#### **Changes From Previous Layout**

1E-09 (Photo Booth: Overhead Lights) becomes 1E-T09 (Lobby: Down Lights)

1E-10 (Photo Booth: Front Lights) becomes **Spare**

1G-T04 (Lounge Bar: Crown Lighting) becomes 1G-T04 (Booth Overhead Lighting)

1G-T05 (Lounge Bar: Cabinet Interior) becomes 1G-T05 (Booth: Front Lighting)



**Photo Booth: Vent Blower**  
 Circuit: "1E-04", Cable: "1E-04"  
 "Orange/XL-HVRB"  
 Single 15A 120V Circuit  
 14-2, 15A AFI Breaker

**Lounge: Fridge - 12" Height**  
 Circuit: "1E-08"  
 14-2, "Emerg. (1L)"  
 Breaker Panel  
 15A AFI Breaker

Cooktop: 240 V @ 50 A (3 wire)

For 32" TV -  
 Above Closet

TV Location Detail

Power

= 15A Duplex  
 = 15A Duplex (Concealed)

= 20A Duplex

= 20A Duplex (Concealed)

= 15A Quad

= 15A Duplex / LAN / Phone

= 15A Duplex (High)

= 20A Outlet Strip with LAN & Phone  
 = 20A Outlet Strip

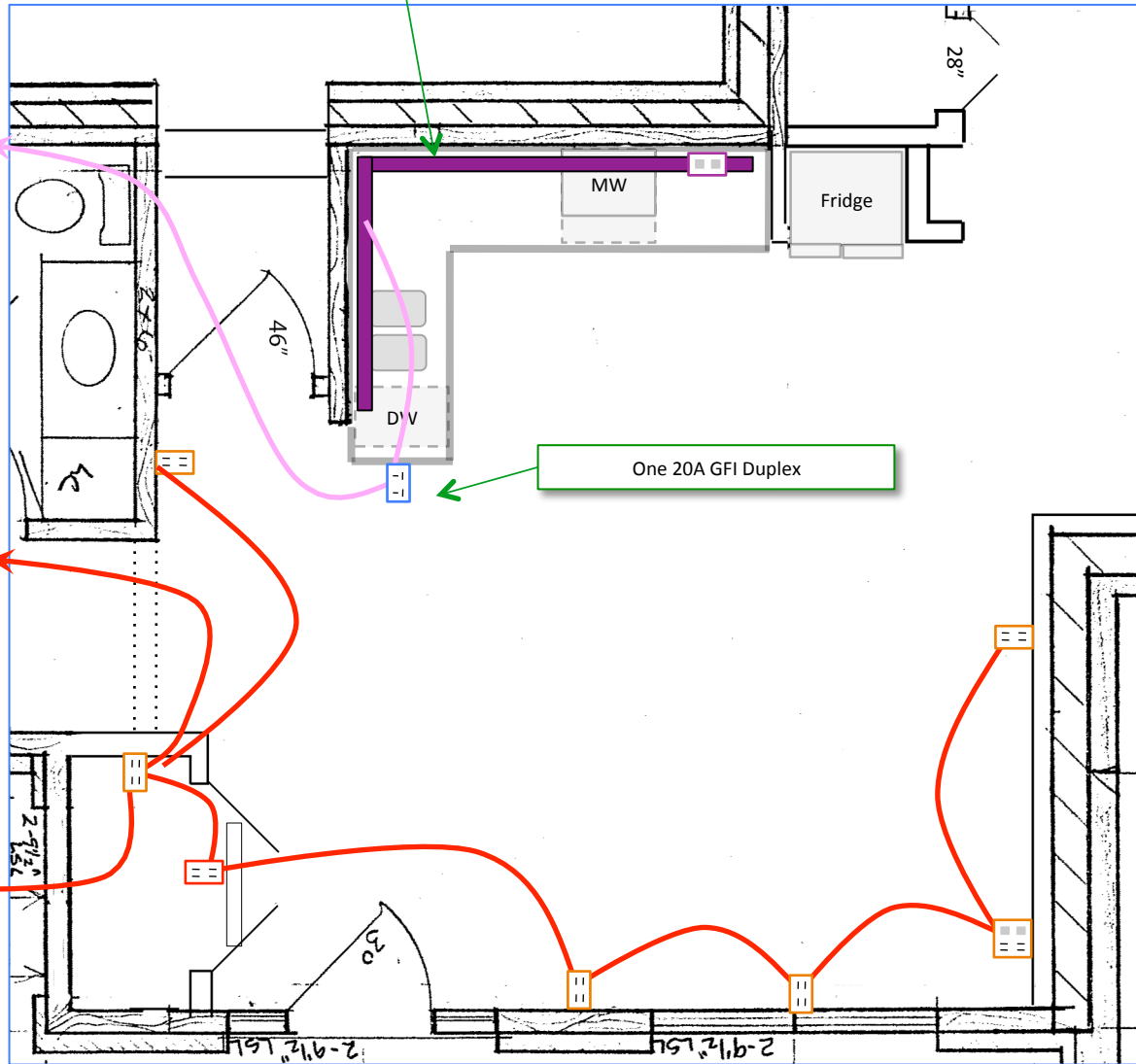
Scale: 4' per inch



Outlets Alternate Between Circuits








Circuit: "1G-13"  
Circuit: "1G-14"  
12-2/2, "Blue/CB-Panel"  
2x 20A AFI Breakers

Circuit: "1G-11"  
14-3, "Blue/XL-HVRB"  
AFI Breaker

Circuit: "1G-11"  
14-3  
Continues to "Changing  
Rooms Hall"

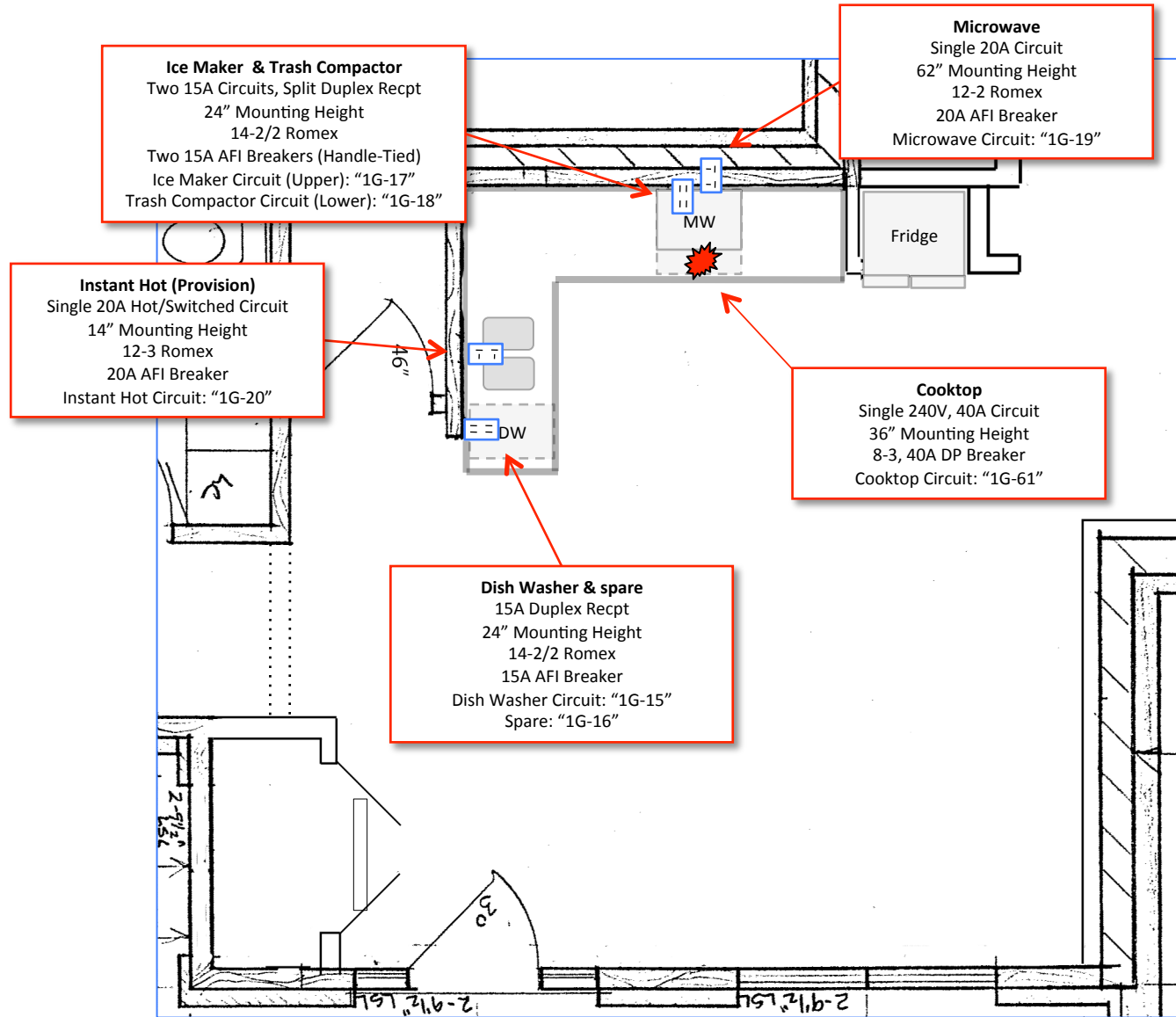








 = 15A Outlet Strip with LAN & Phone  
 = 15A Outlet Strip

 = 15A Duplex  
 = 15A Duplex (Concealed)  
 = 20A Duplex  
 = 20A Duplex (Concealed)  
 = 15A Quad  
 = 15A Duplex / LAN / Phone  
 = 15A Duplex (High)

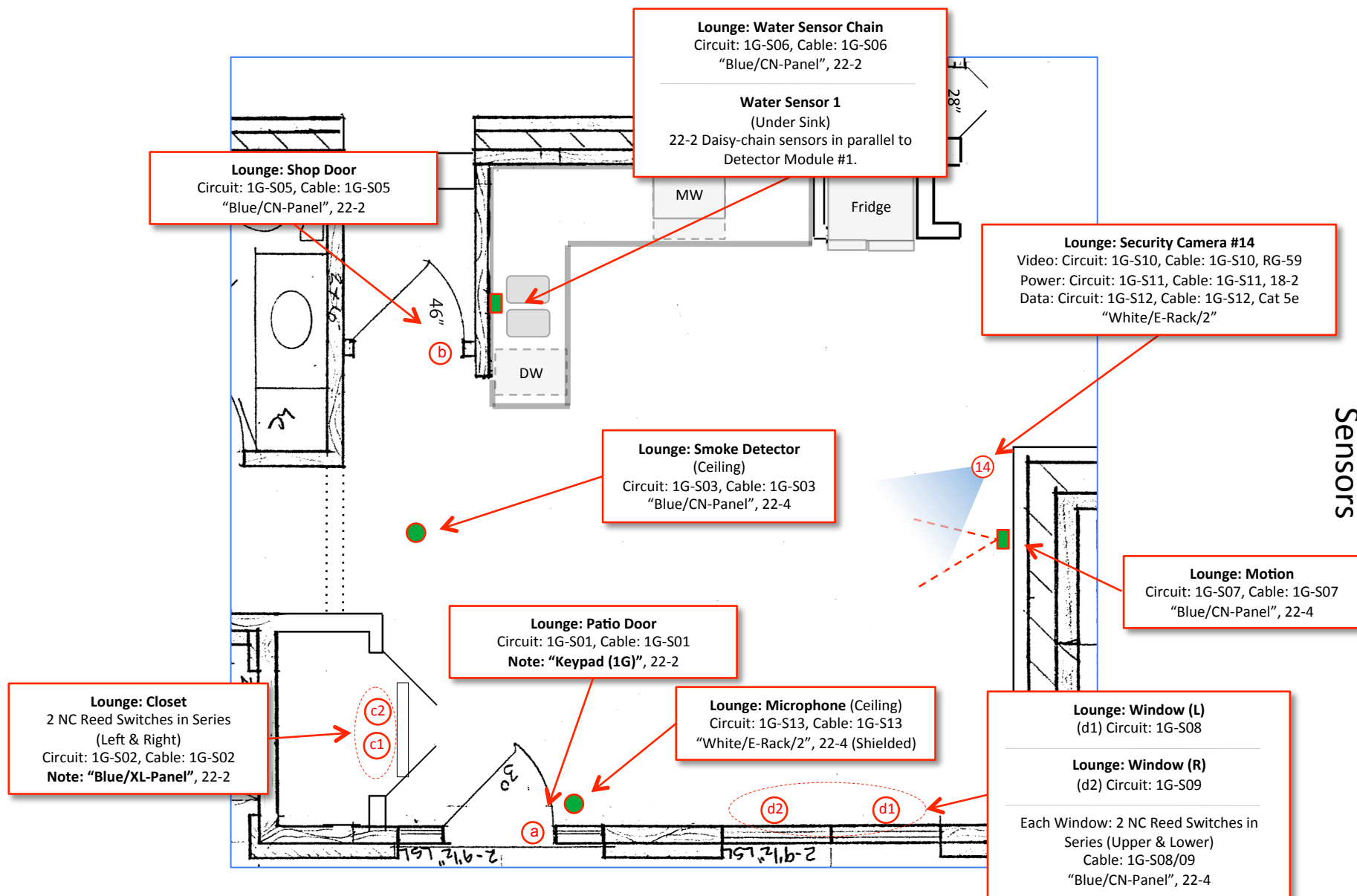
Scale: 4' per inch

Power Wiring 1



-  = 15A Duplex
-  = 15A Duplex (Concealed)
-  = 20A Duplex
-  = 20A Duplex (Concealed)
-  = 15A Quad
-  = 15A Duplex / LAN / Phone

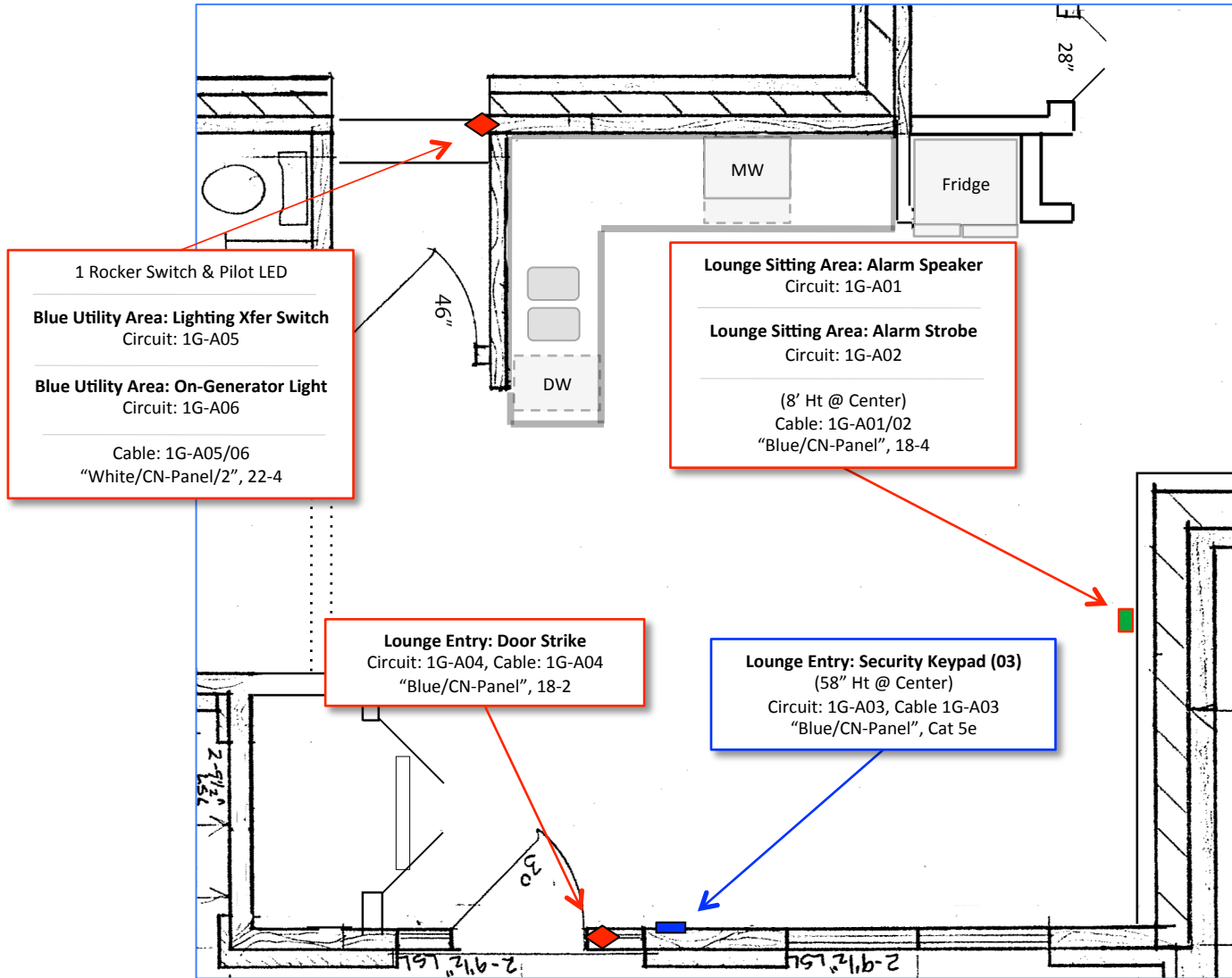
Scale: 4' per inch



Sensors

(x) = NC Door/Window Sensor (Concealed Reed)

Scale: 4' per inch



1 Rocker Switch & Pilot LED

**Blue Utility Area: Lighting Xfer Switch**  
Circuit: 1G-A05

**Blue Utility Area: On-Generator Light**  
Circuit: 1G-A06

Cable: 1G-A05/06  
"White/CN-Panel/2", 22-4

**Lounge Sitting Area: Alarm Speaker**  
Circuit: 1G-A01

**Lounge Sitting Area: Alarm Strobe**  
Circuit: 1G-A02

(8' Ht @ Center)  
Cable: 1G-A01/02  
"Blue/CN-Panel", 18-4

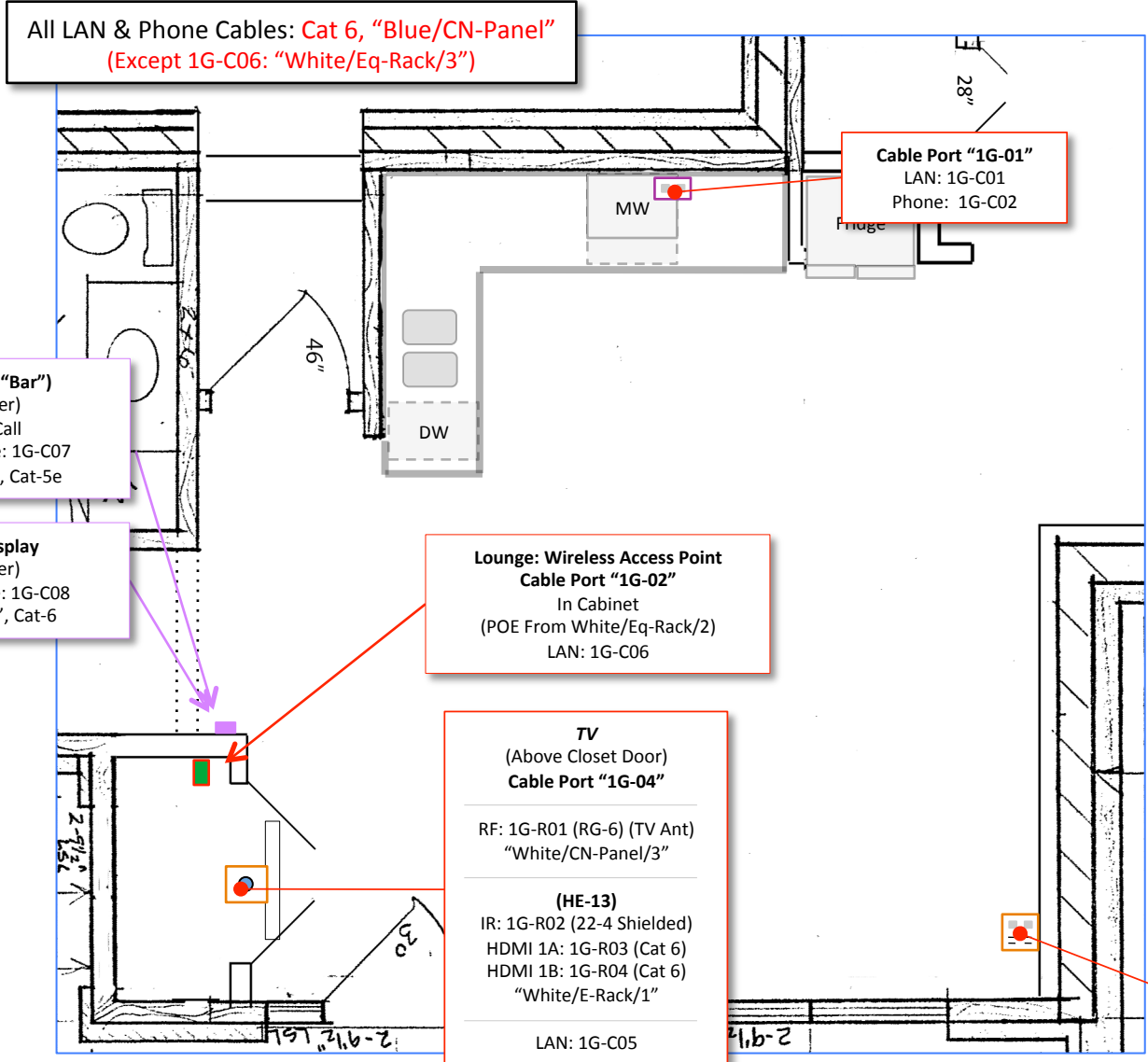
**Lounge Entry: Door Strike**  
Circuit: 1G-A04, Cable: 1G-A04  
"Blue/CN-Panel", 18-2


**Lounge Entry: Security Keypad (03)**  
(58" Ht @ Center)  
Circuit: 1G-A03, Cable 1G-A03  
"Blue/CN-Panel", Cat 5e


Automation Controls

Scale: 4' per inch

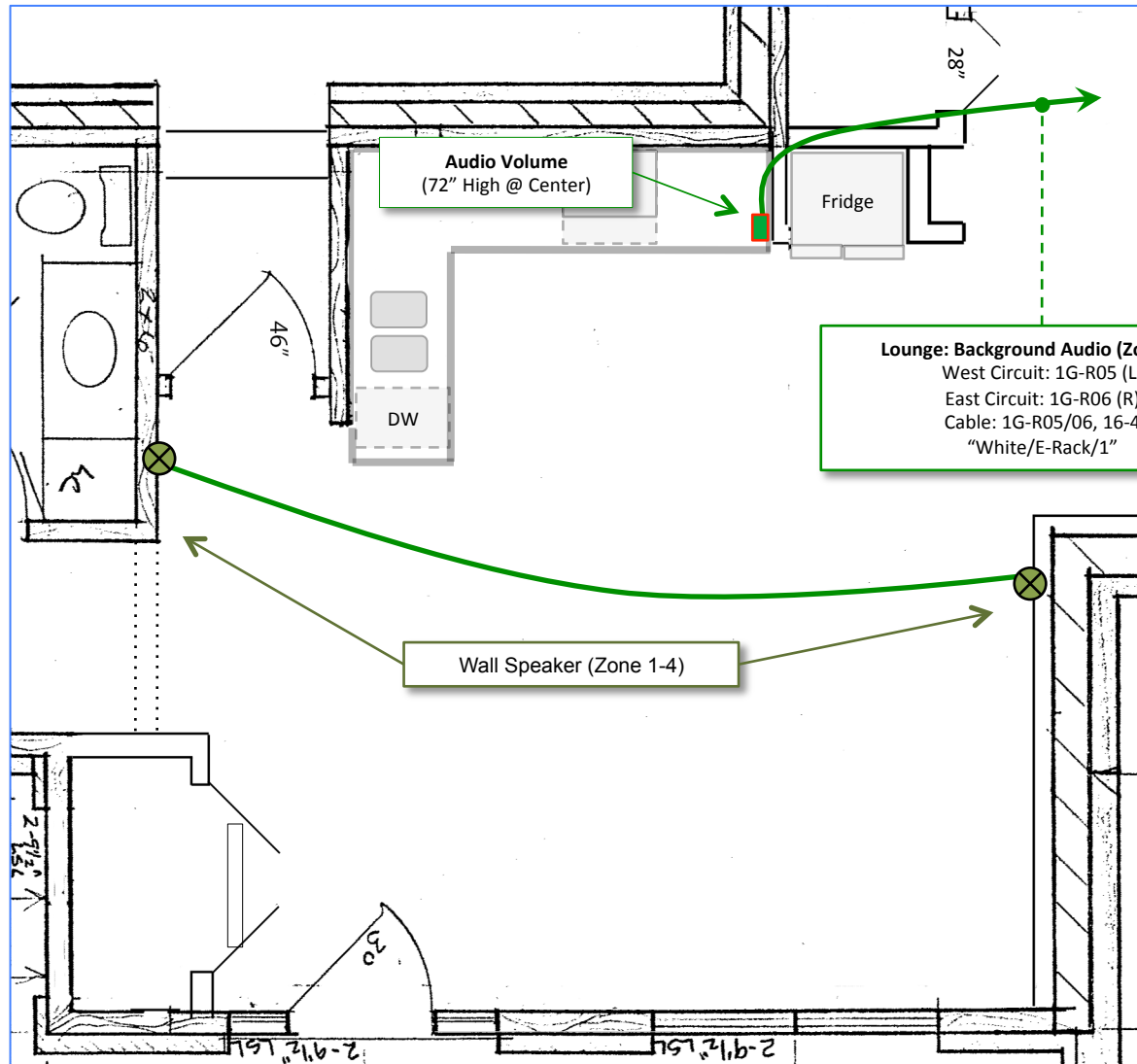






 = 15A Duplex / LAN / Phone

 = 20A Outlet Strip with LAN & Phone

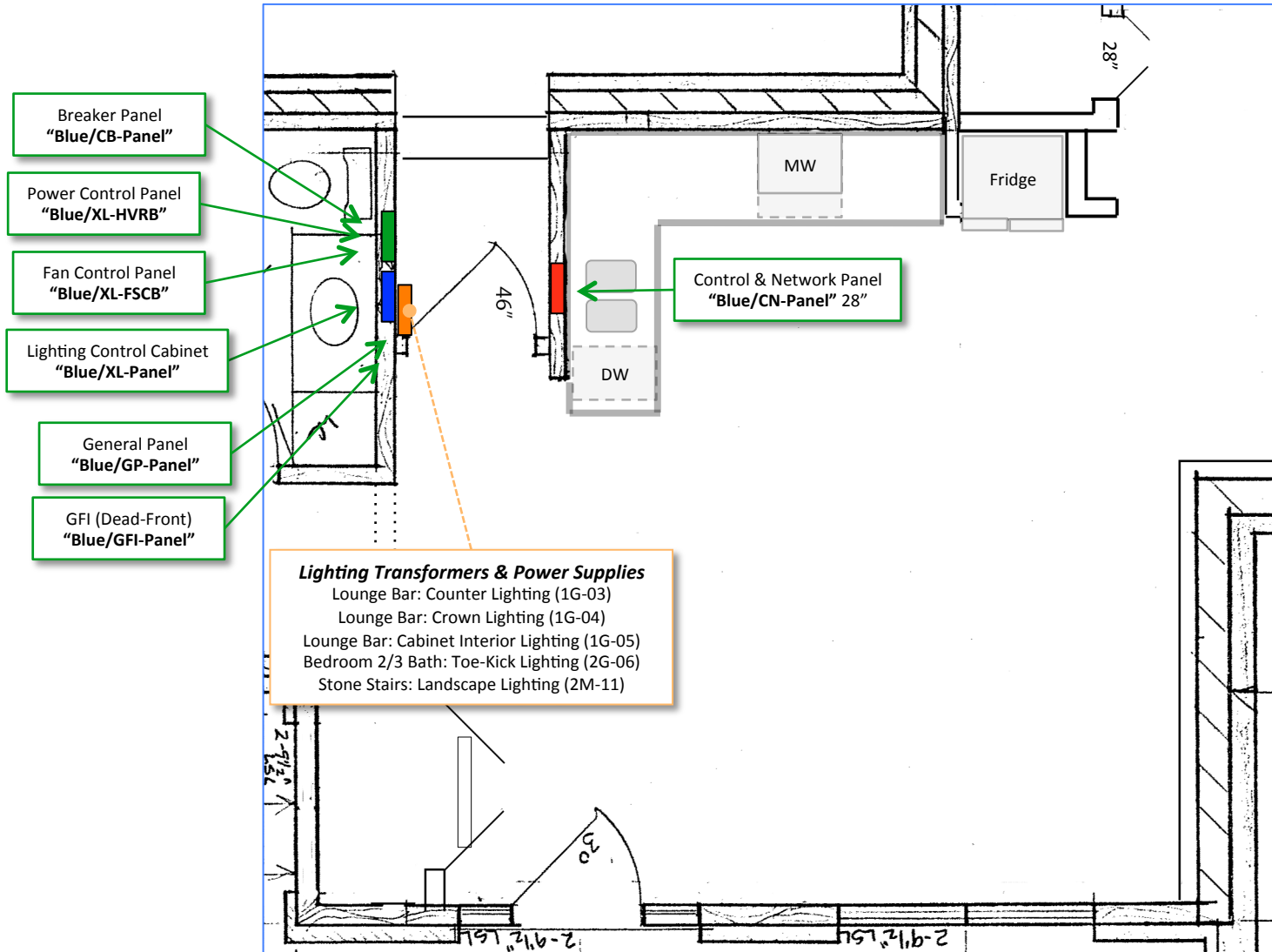
Scale: 4' per inch



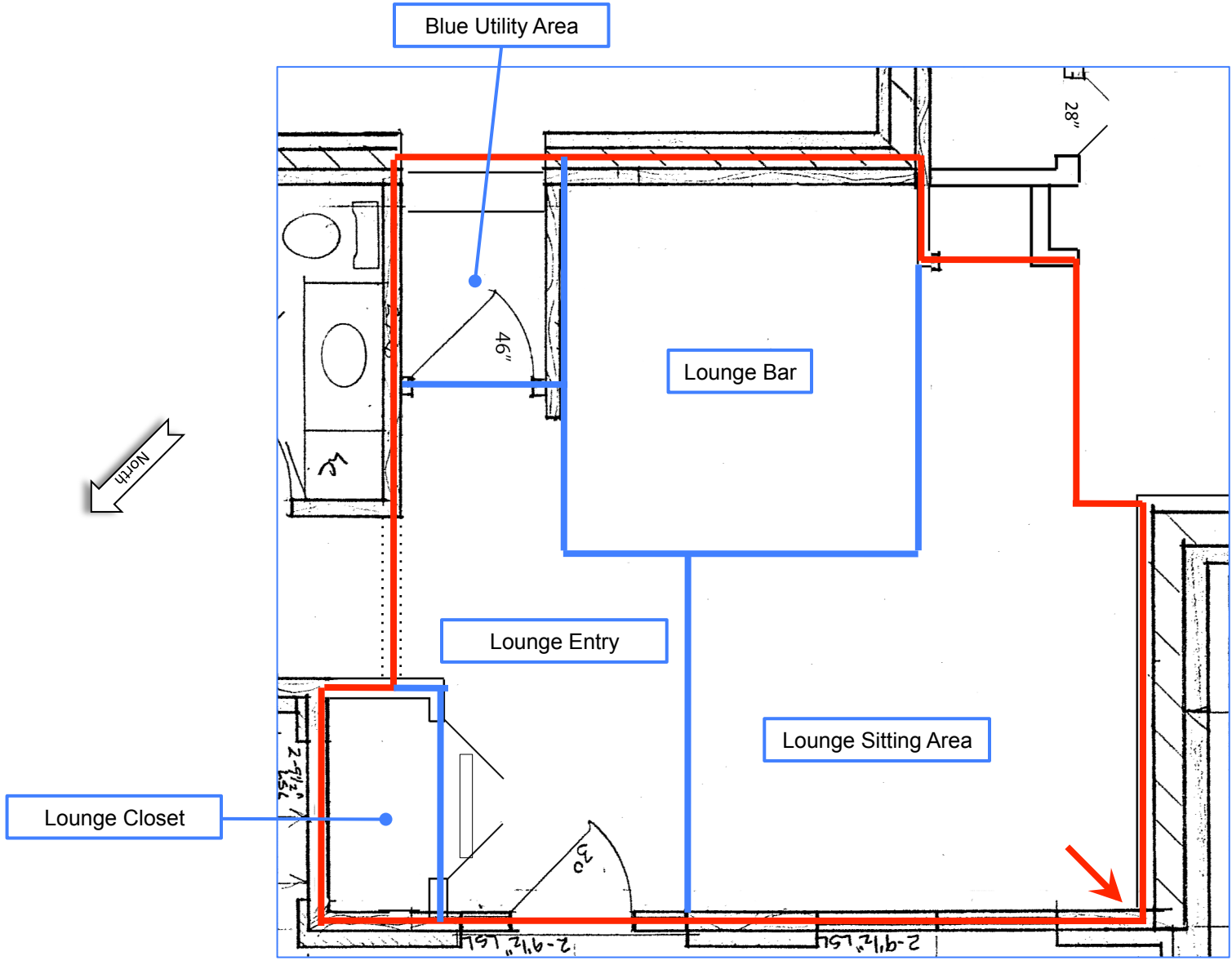
Systems 2

 = 15A Duplex /  
 LAN / Phone

Scale: 4' per inch



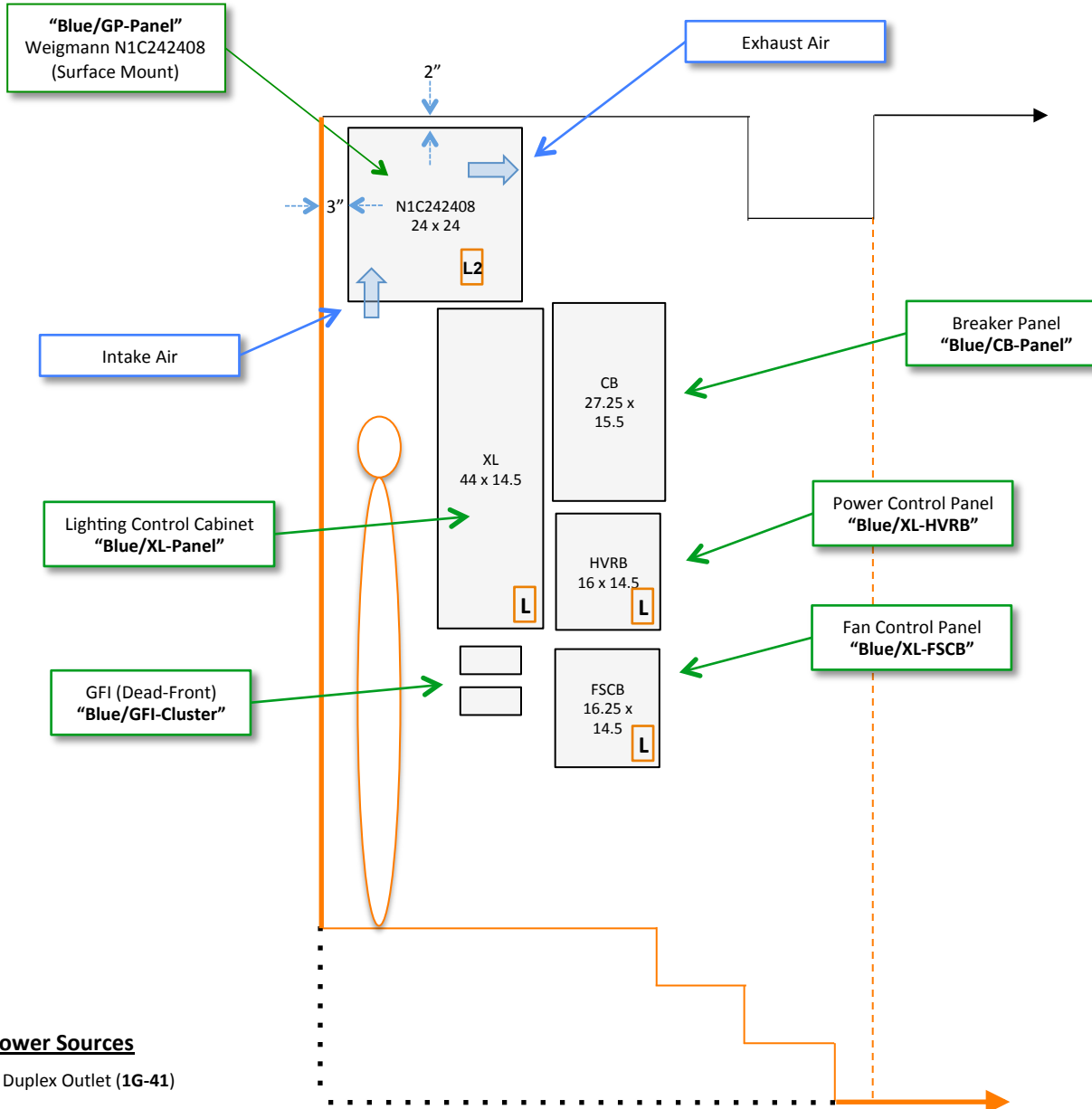
Scale: 4' per inch



Region Overview

- | = Area Boundary
- | = Region Boundary
- ↘ = Region Anchor Point (Corner)

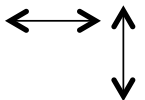
Scale: 4' per inch



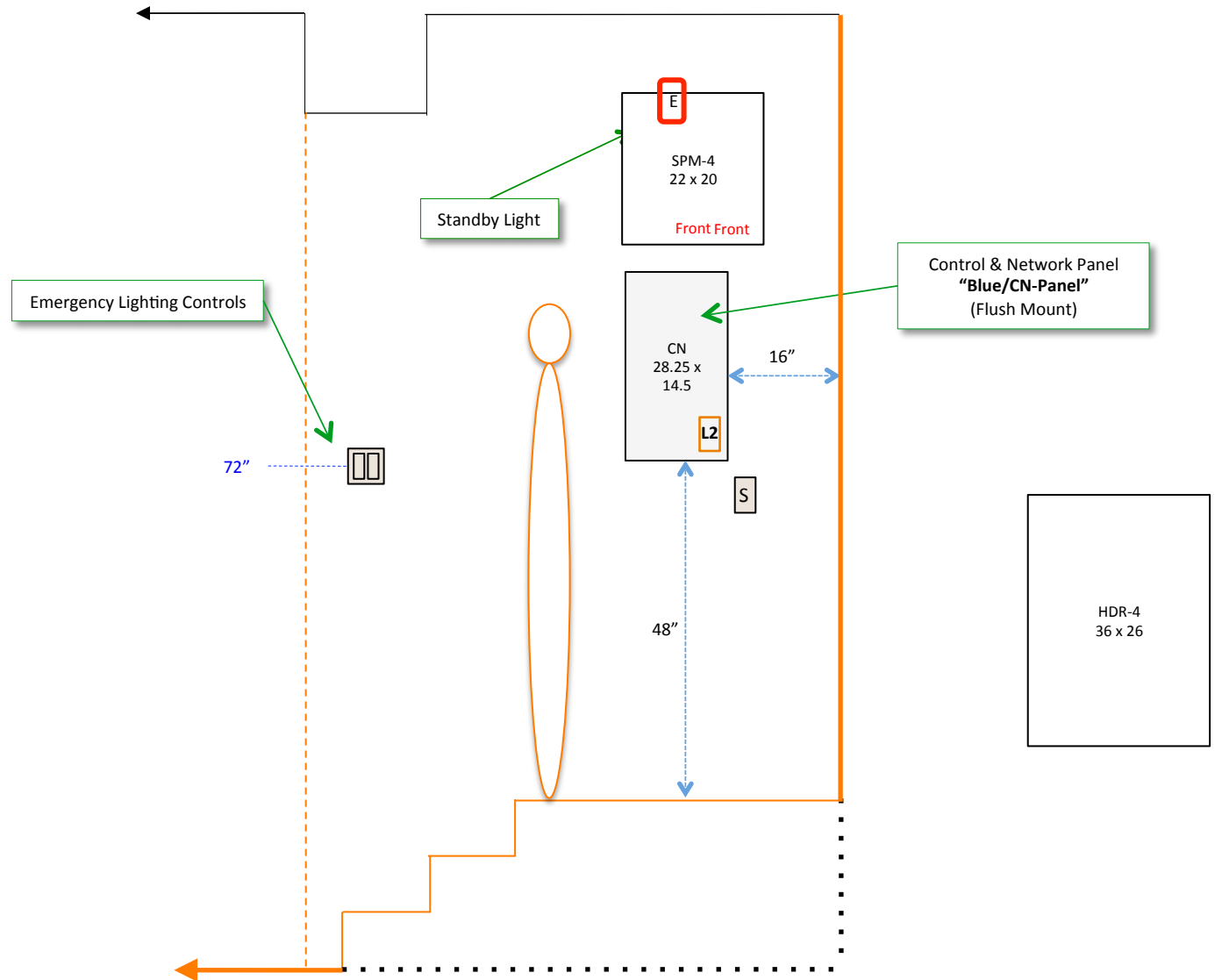
**120V Power Sources**

**L** = Line, Duplex Outlet (1G-41)

**L2** = Transfer Switch, Duplex Outlet (1G-33)



Scale: 2' per inch



**120V Power Sources**

L2 = Transfer Switch, Duplex Outlet (1G-33)

Scale: 2' per inch