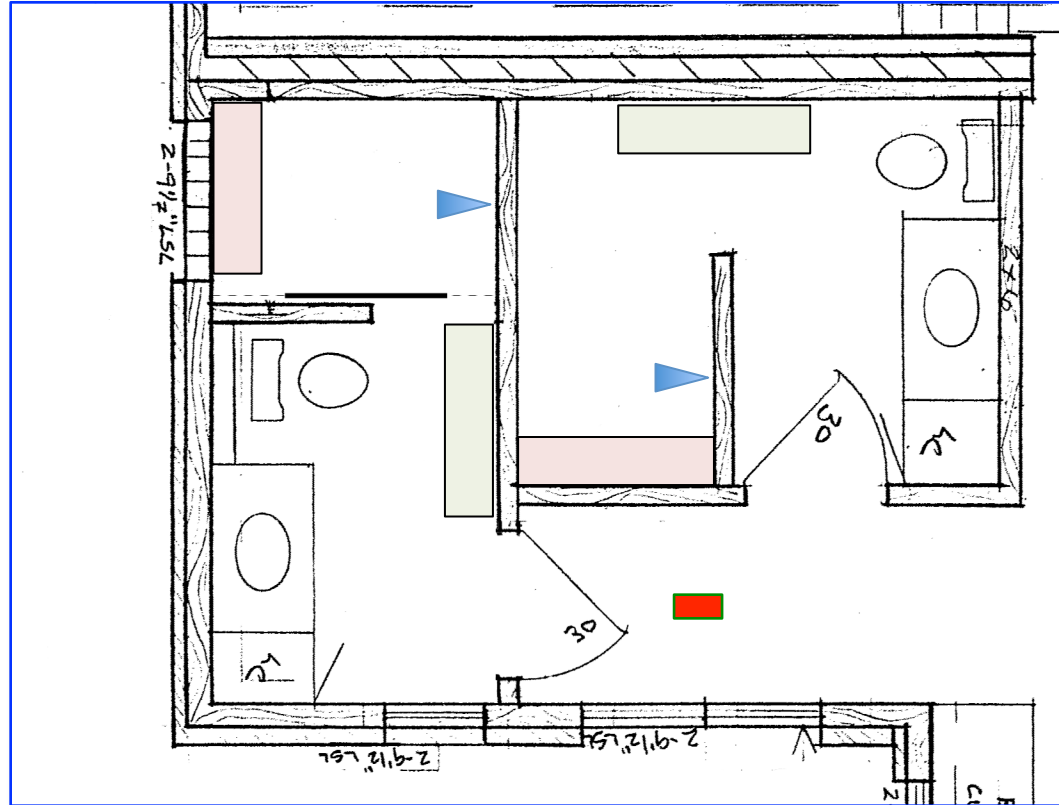




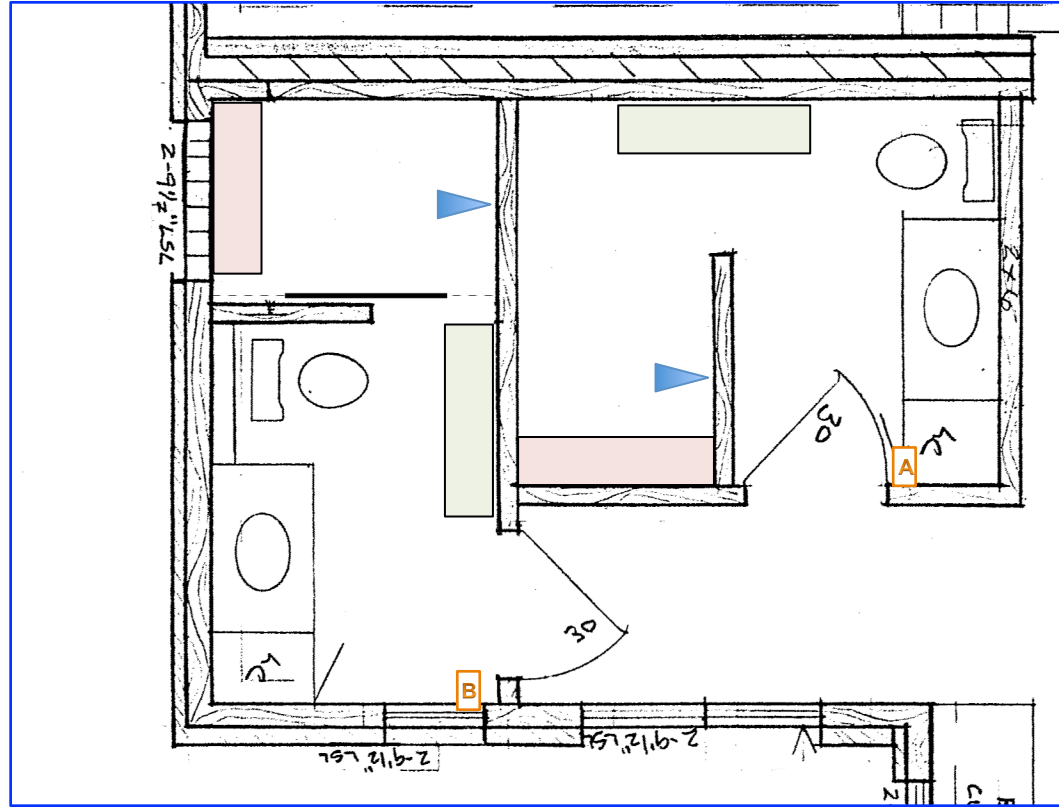
Floor Plan

Scale: 4' per inch



-  = Supply Air Duct
-  = Return Air Duct

Scale: 4' per inch

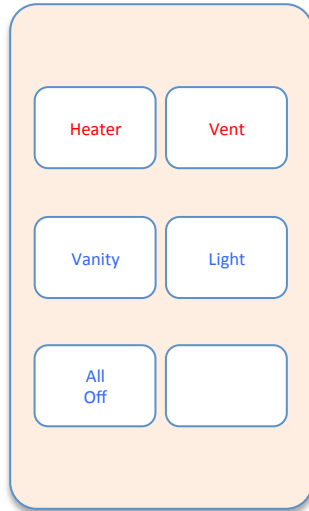


Lighting Controls

X = Switch Cluster

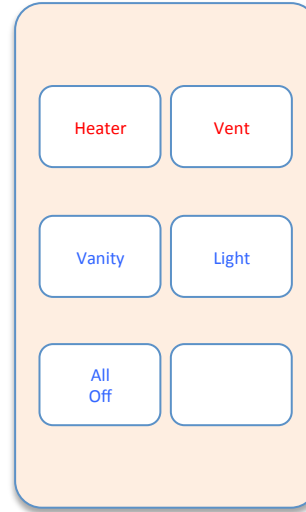
Scale: 4' per inch

Keypad Location 1H-A
Changing Room A, Northwest Wall

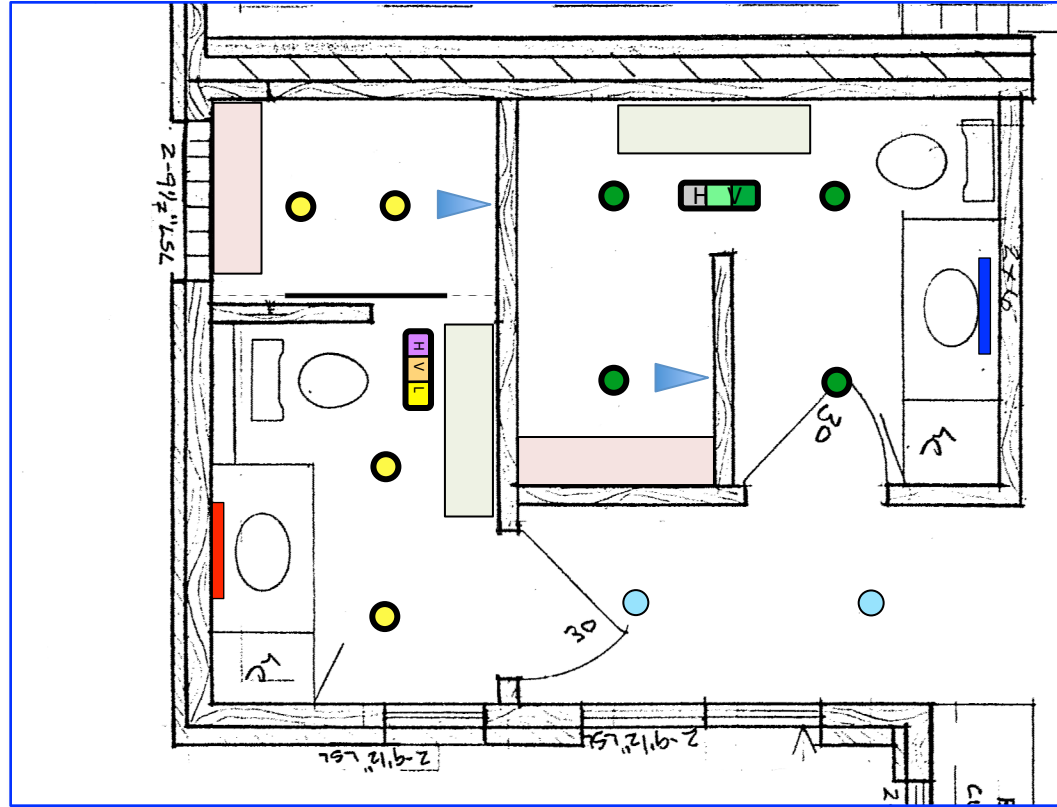


Cables
1 – Blue

Keypad Location 1H-B
Changing Room B, Northwest Wall



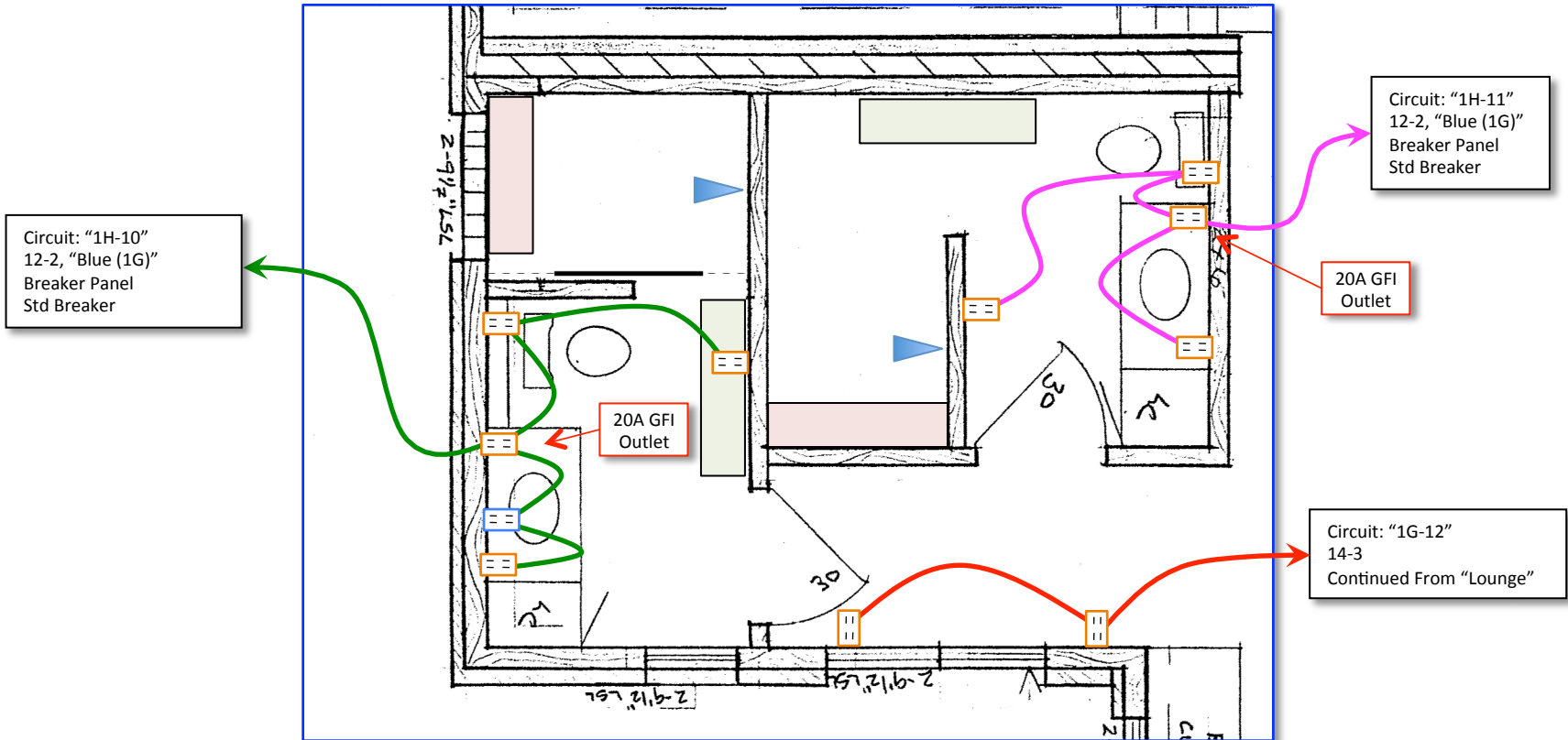
Cables
1 – Blue



- = Light Bar (1H-04)
- = Light Bar (1H-05)
- = 5" Incand Recessed (1H-01)
- = 5" Incand Recessed (1H-02)
- = 5" Incand Recessed (1H-03)
- H | V | L = Light/Heater/Exhaust Fan

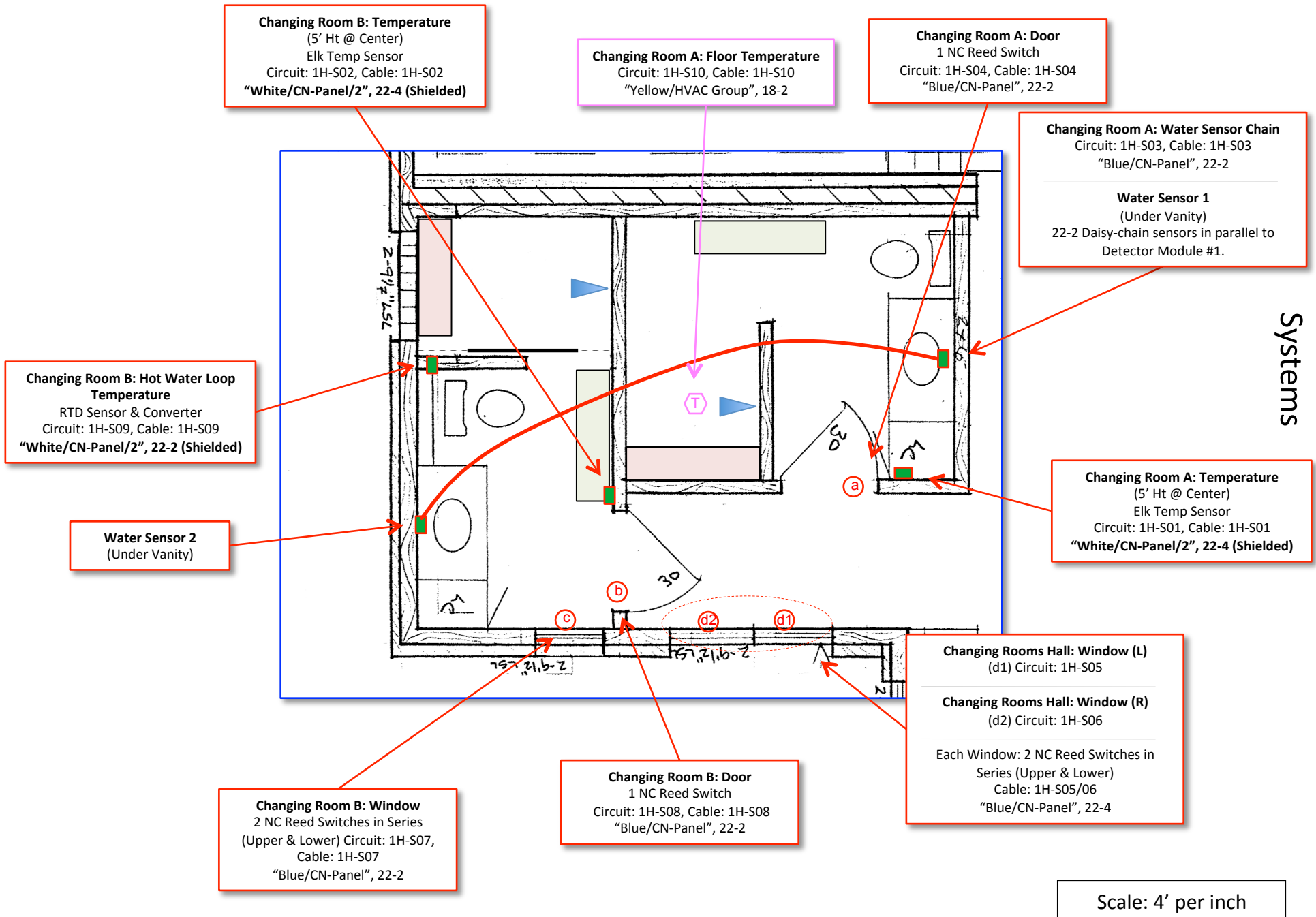
Scale: 4' per inch

Lighting

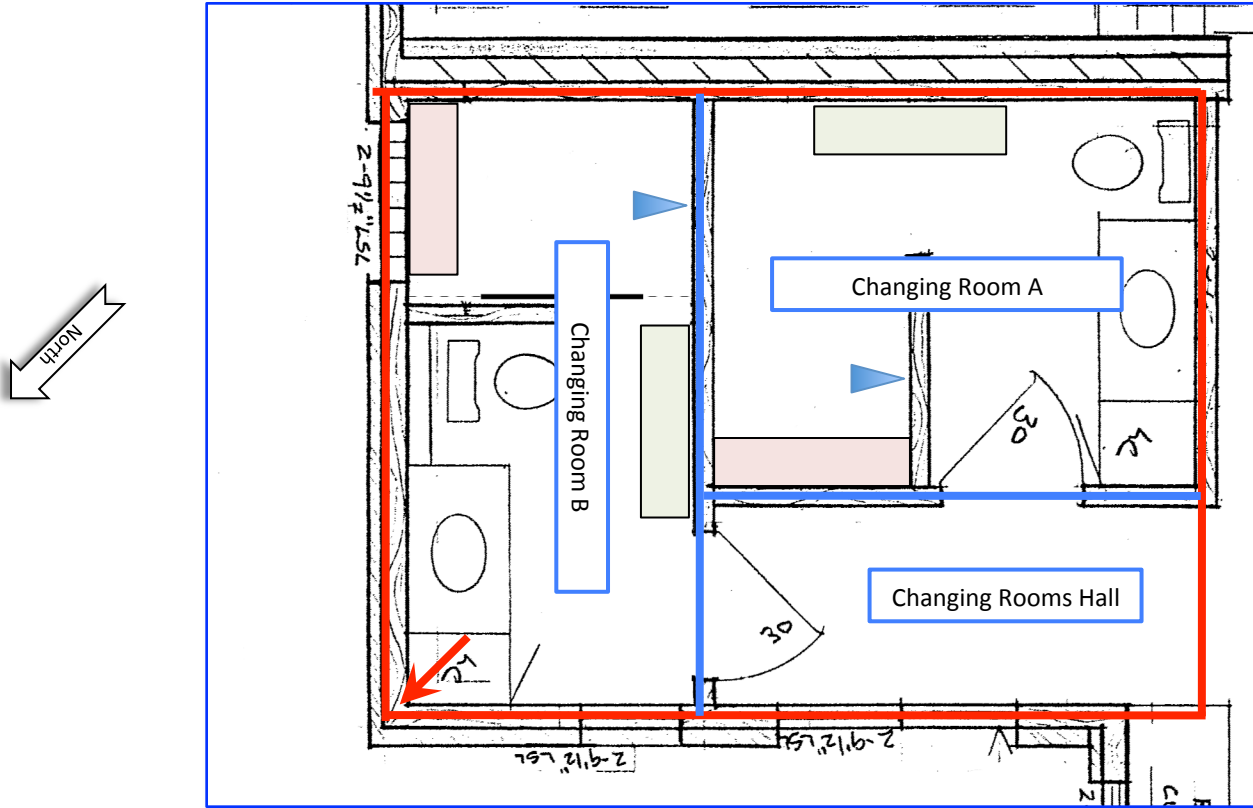


 = 15A Duplex
  = 15A Duplex (Concealed)

Scale: 4' per inch



Systems



Region Overview

— = Area Boundary

— = Region Boundary

↙ = Region Anchor Point (Corner)

Scale: 4' per inch