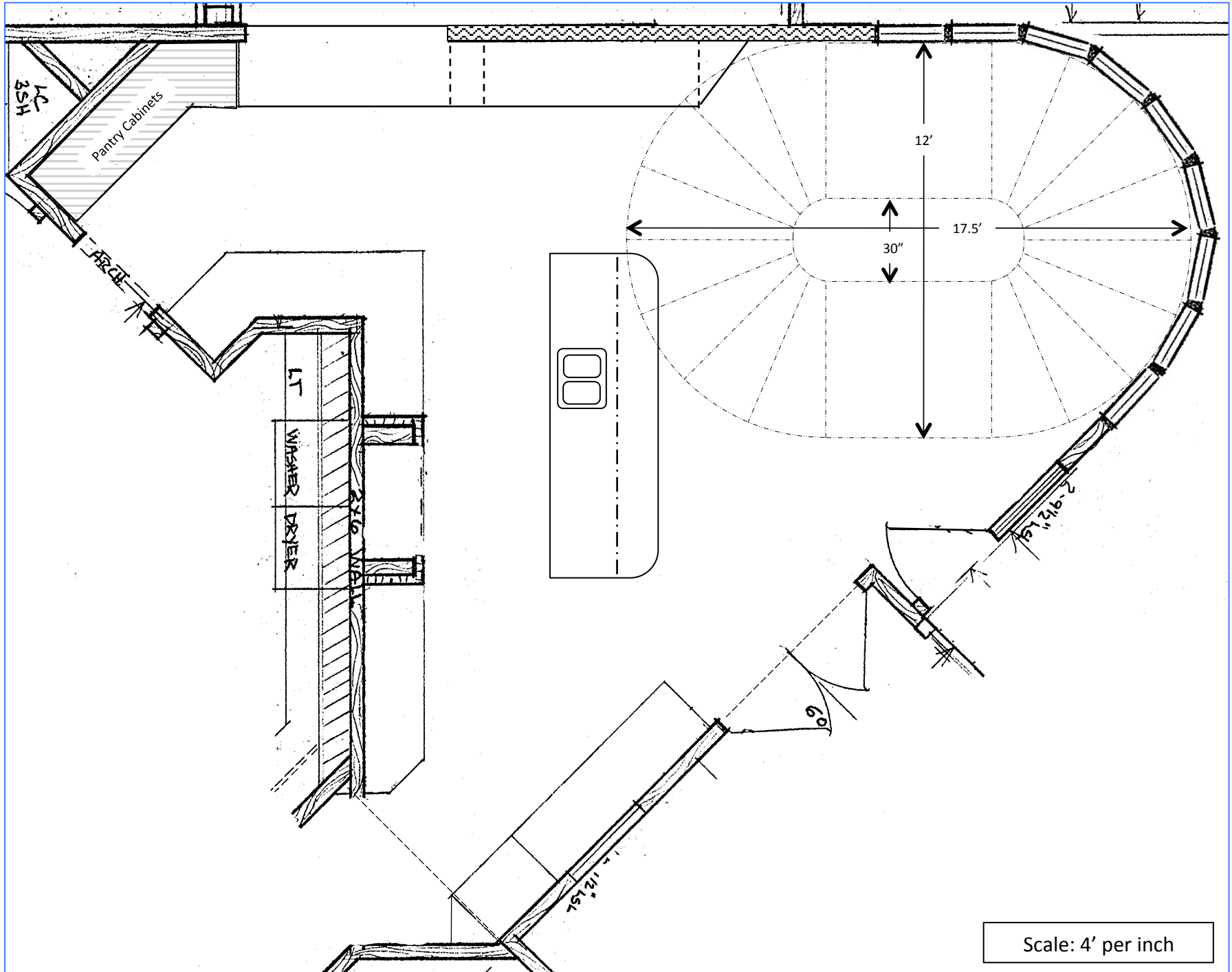
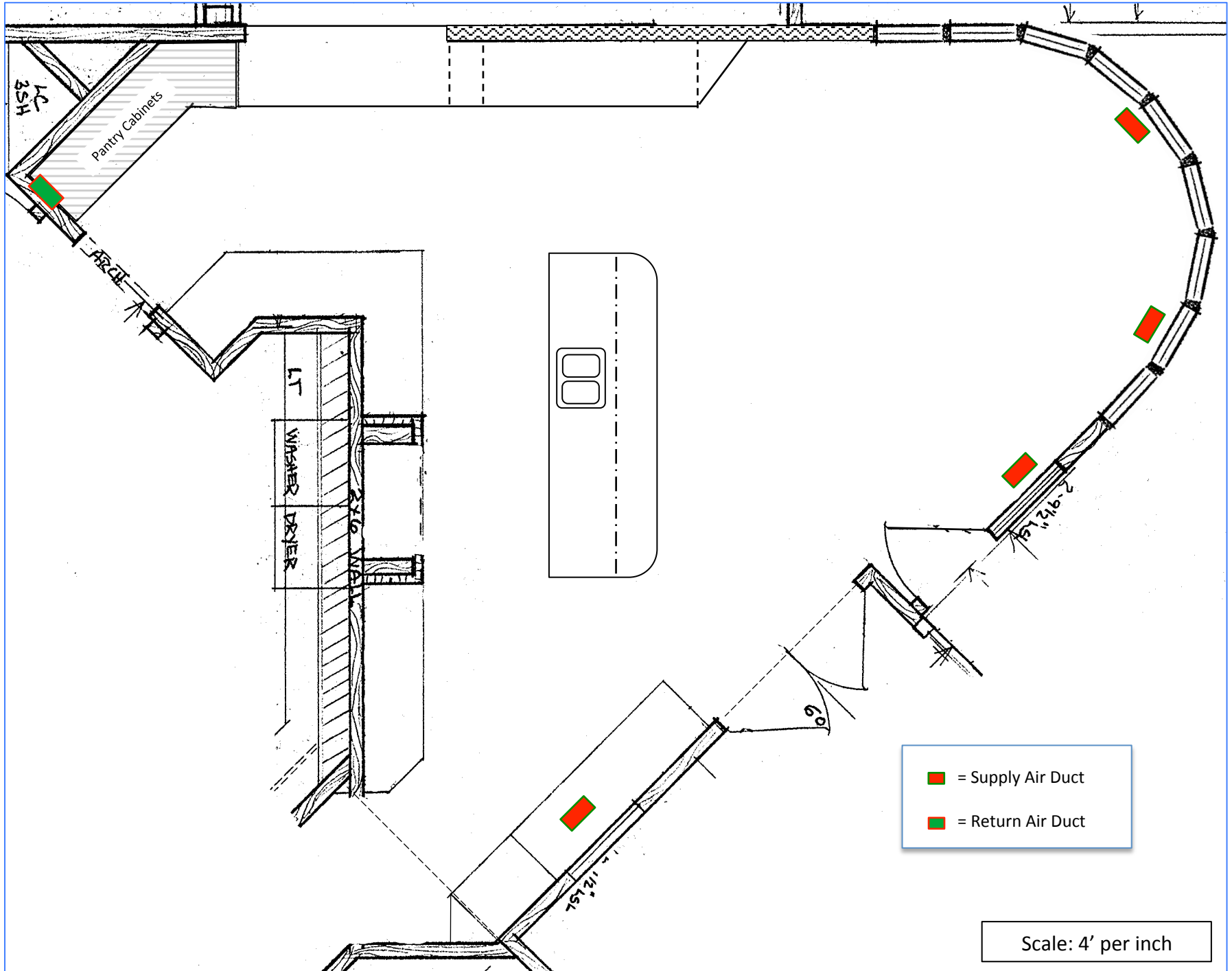


Floor Plan

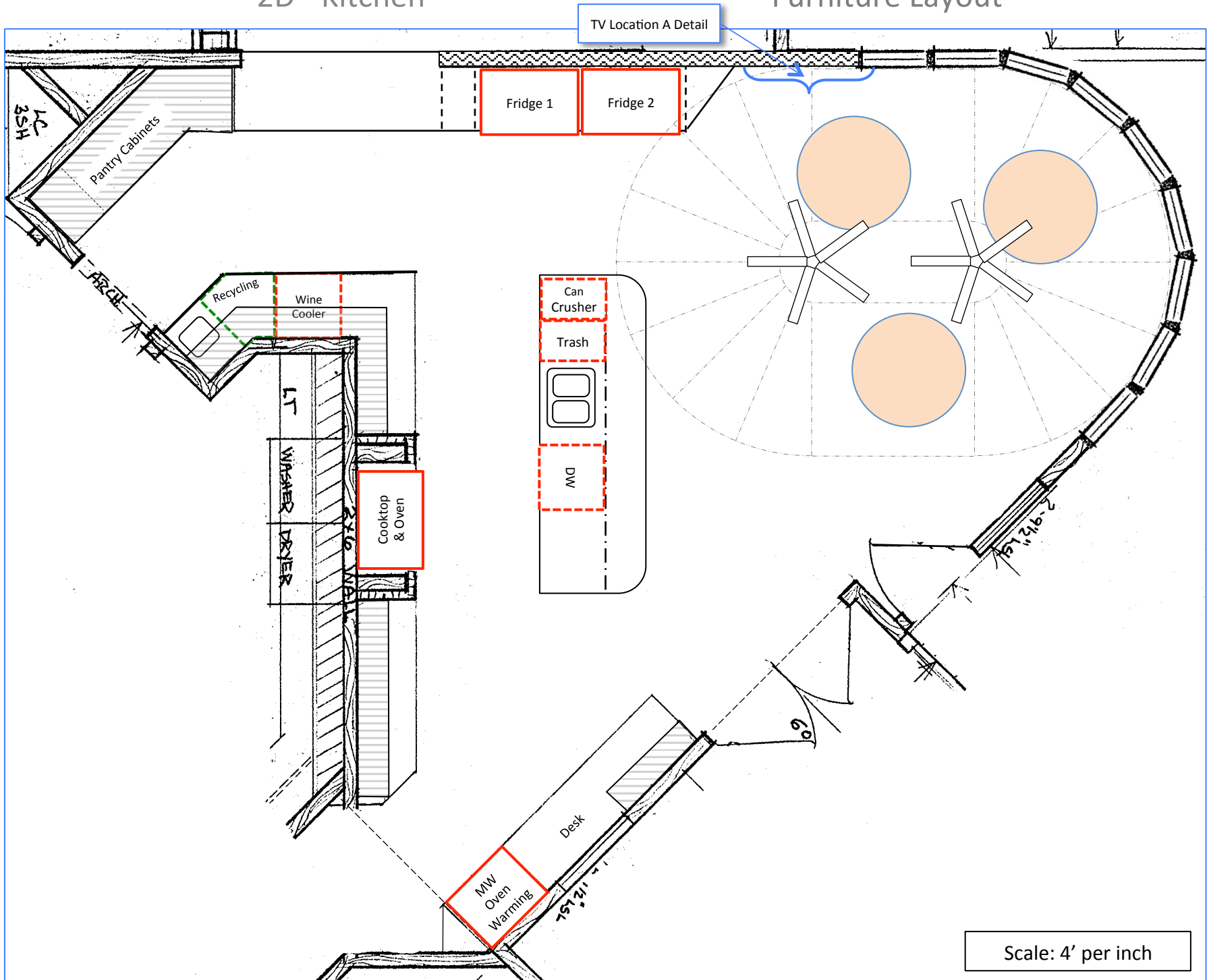


Ceiling Detail

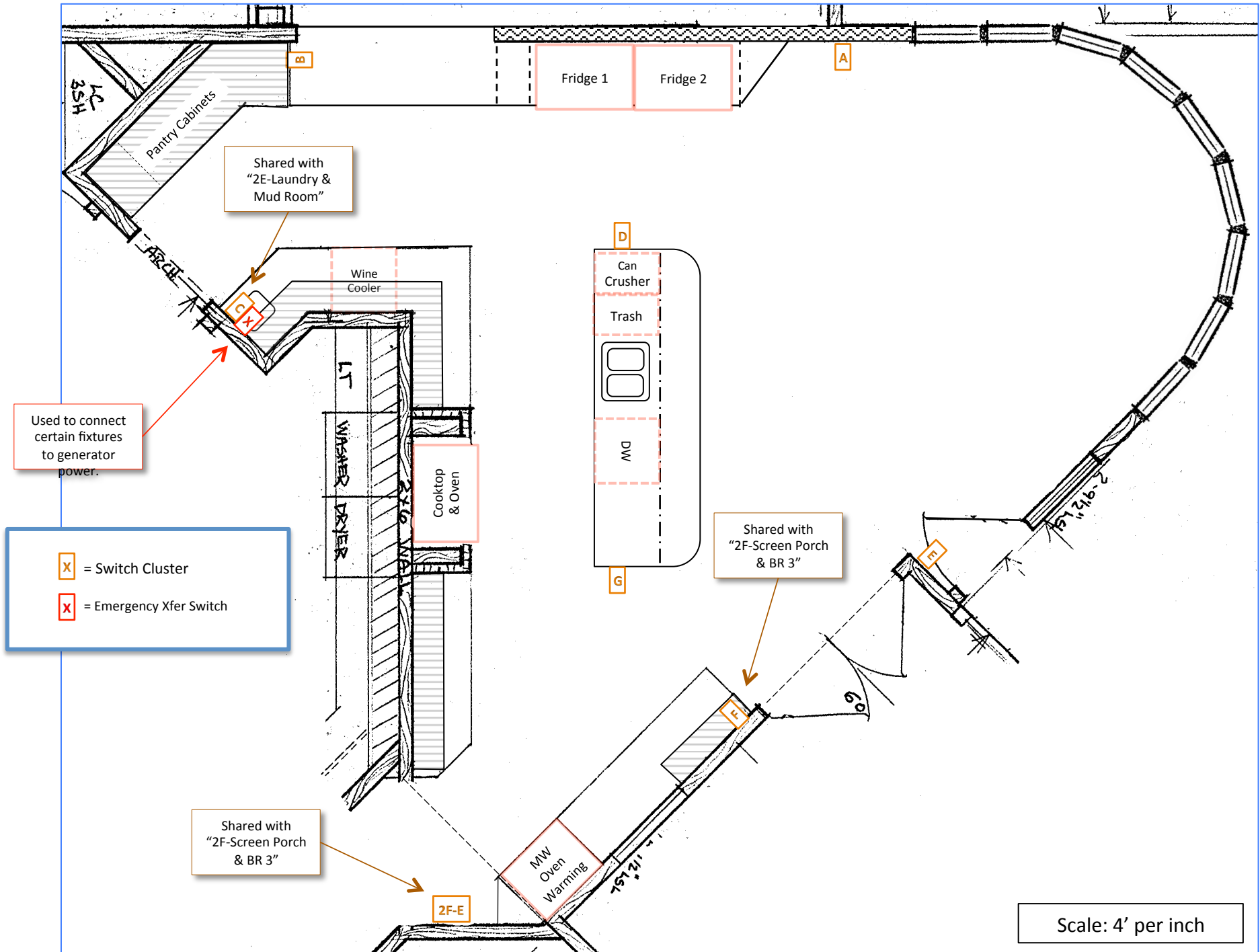
Scale: 4' per inch

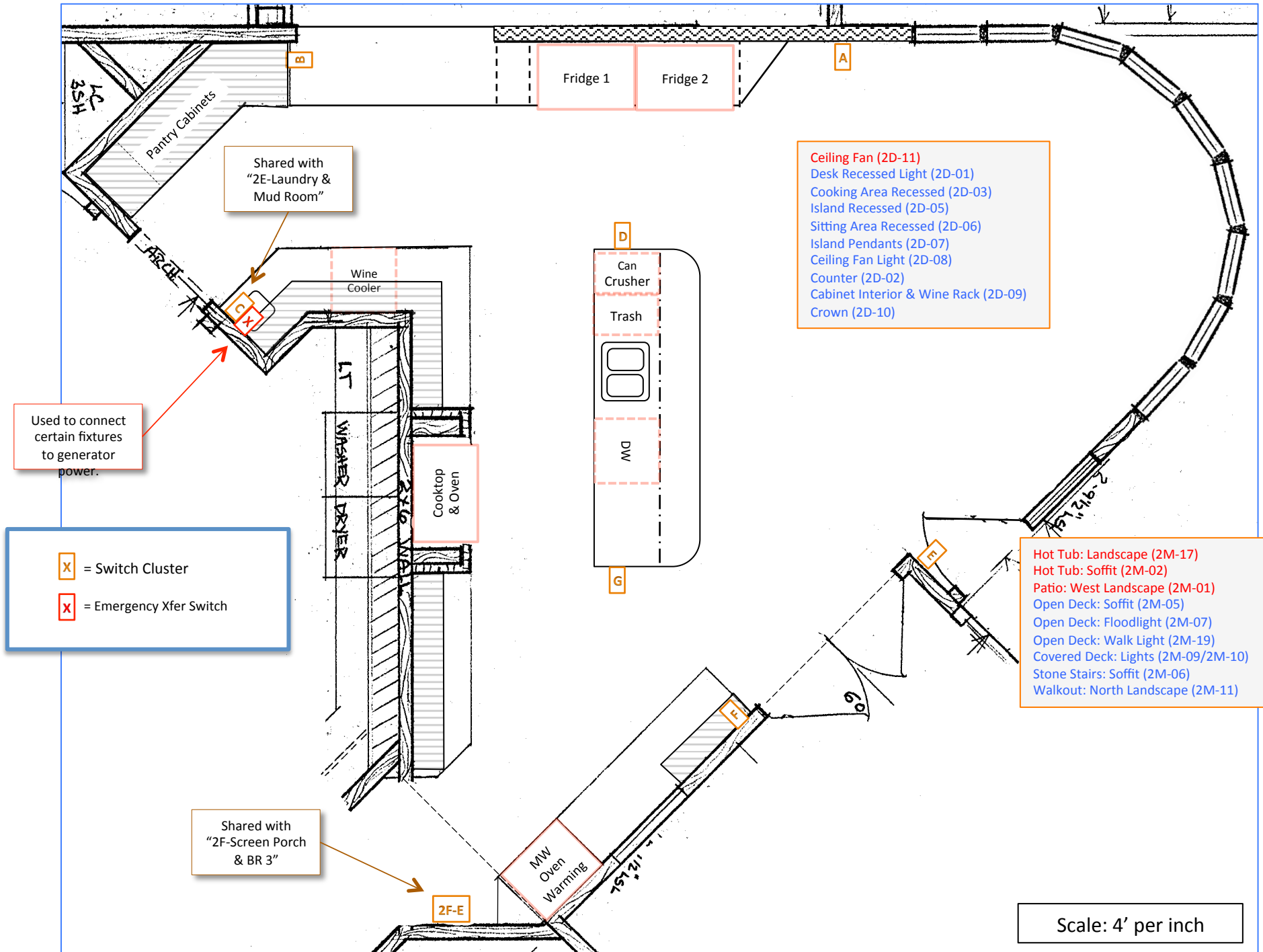


HVAC Duct Locations



Furniture Layout





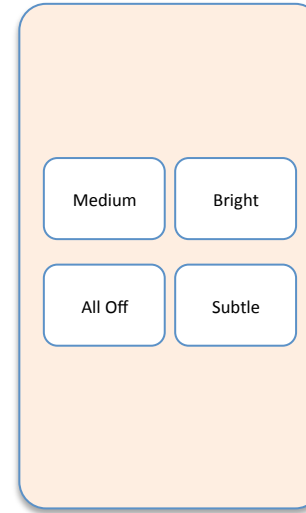
Keypad Location 2D-A
Kitchen, Dining Area



- Ceiling Fan (2D-11)
- Desk Recessed Light (2D-01)
- Cooking Area Recessed (2D-03)
- Island Recessed (2D-05)
- Sitting Area Recessed (2D-06)
- Island Pendants (2D-07)
- Ceiling Fan Light (2D-08)
- Counter (2D-02)
- Cabinet Interior & Wine Rack (2D-09)
- Crown (2D-10)

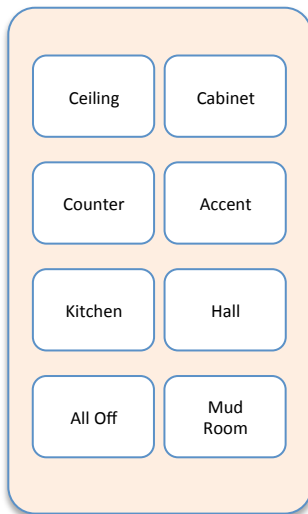
Cables
2 - Green

Keypad Location 2D-B
Kitchen, Dining Room



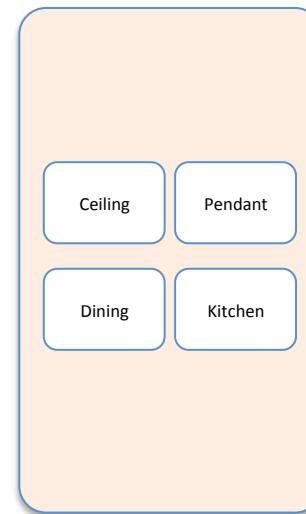
Cables
1 - Green

Keypad Location 2D-C
Kitchen, Pantry Entry



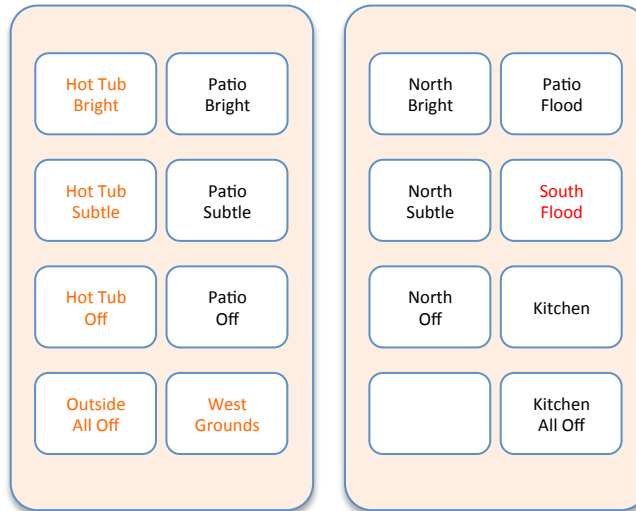
Cables
2 - Orange

Keypad Location 2D-D
Kitchen, Island (South)



Cables
1 - Green

Keypad Location 2D-E (L&R)
Kitchen, Covered Deck Entry
(Controls for West Yard)



- Hot Tub: Landscape (2M-17)
- Hot Tub: Soffit (2M-02)
- Patio: West Landscape (2M-01)
- Open Deck: Soffit (2M-05)
- Open Deck: Floodlight (2M-07)
- Open Deck: Walk Light (2M-19)
- Covered Deck: Lights (2M-09/2M-10)
- Stone Stairs: Soffit (2M-06)
- Walkout: North Landscape (2M-11)

- Island Recessed (2D-05)
- Sitting Area Recessed (2D-06)

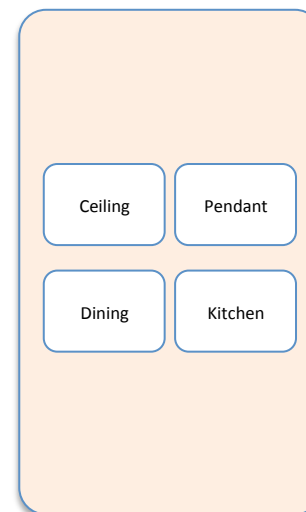
Cables
2 – Green
1 – White

Keypad Location 2D-F
Kitchen, Screen Porch Door

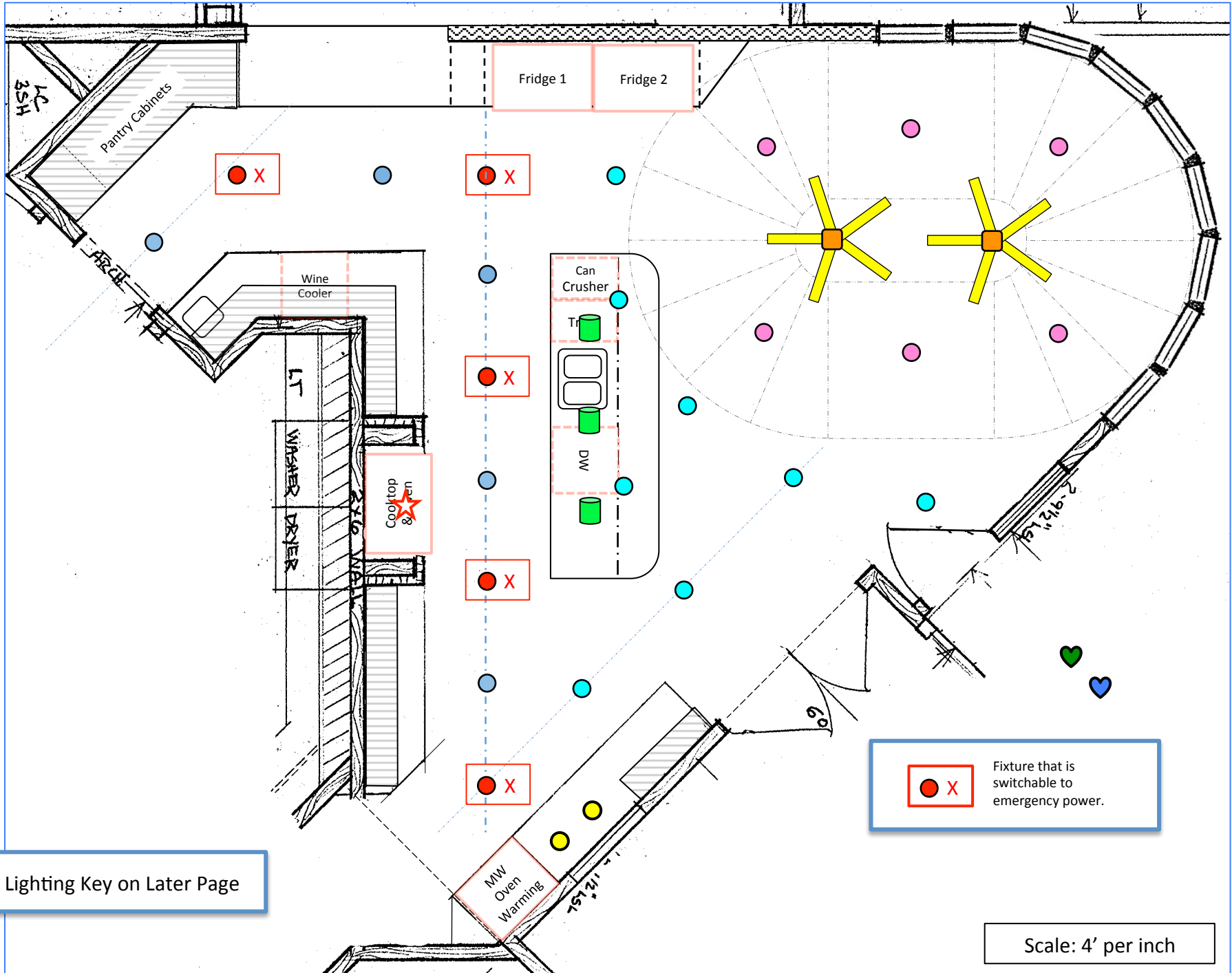


Cables
1 – Green

Keypad Location 2D-G
Kitchen, Island (North)



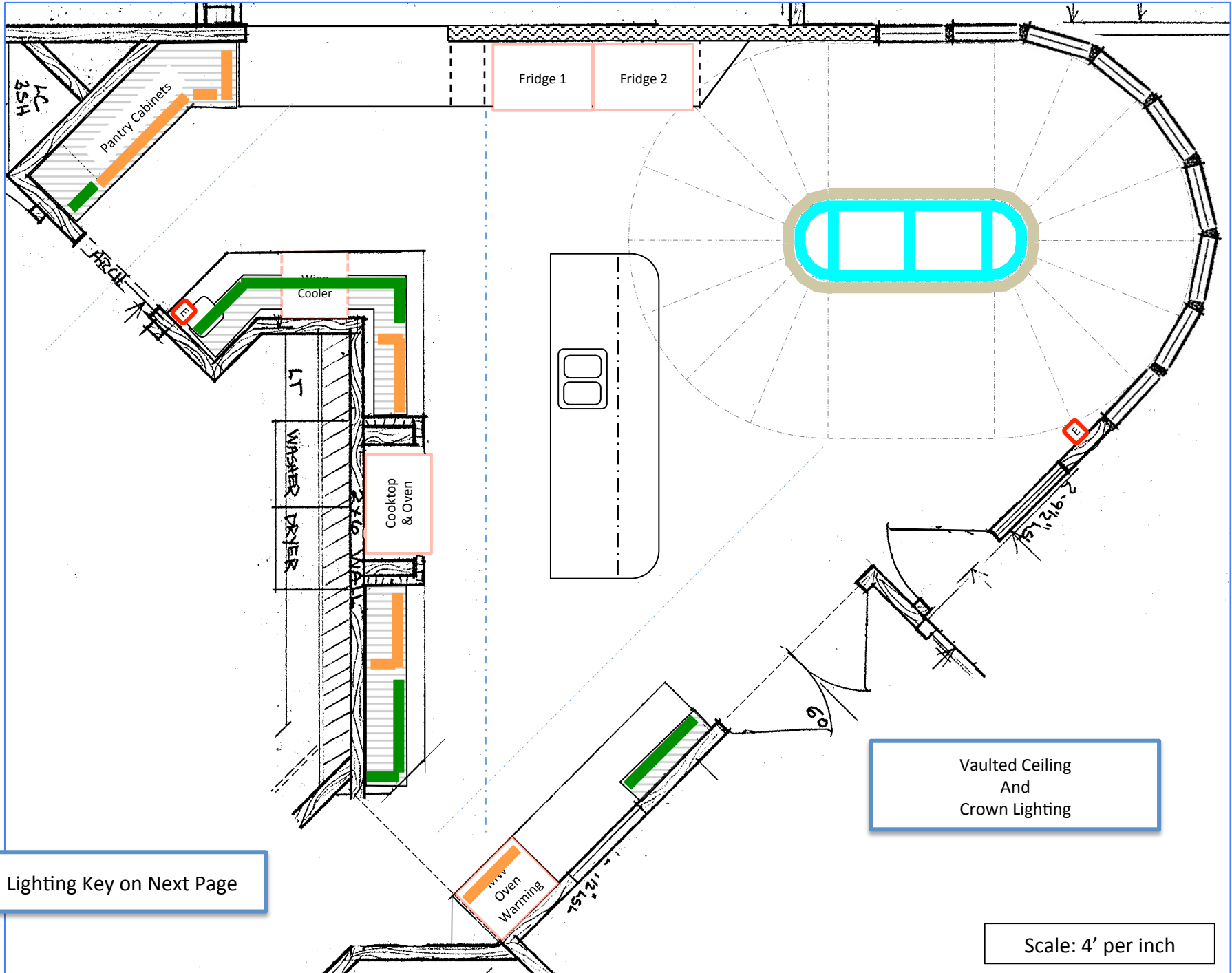
Cables
1 - Green



Lighting Fixtures 1

Lighting Key on Later Page

Scale: 4' per inch

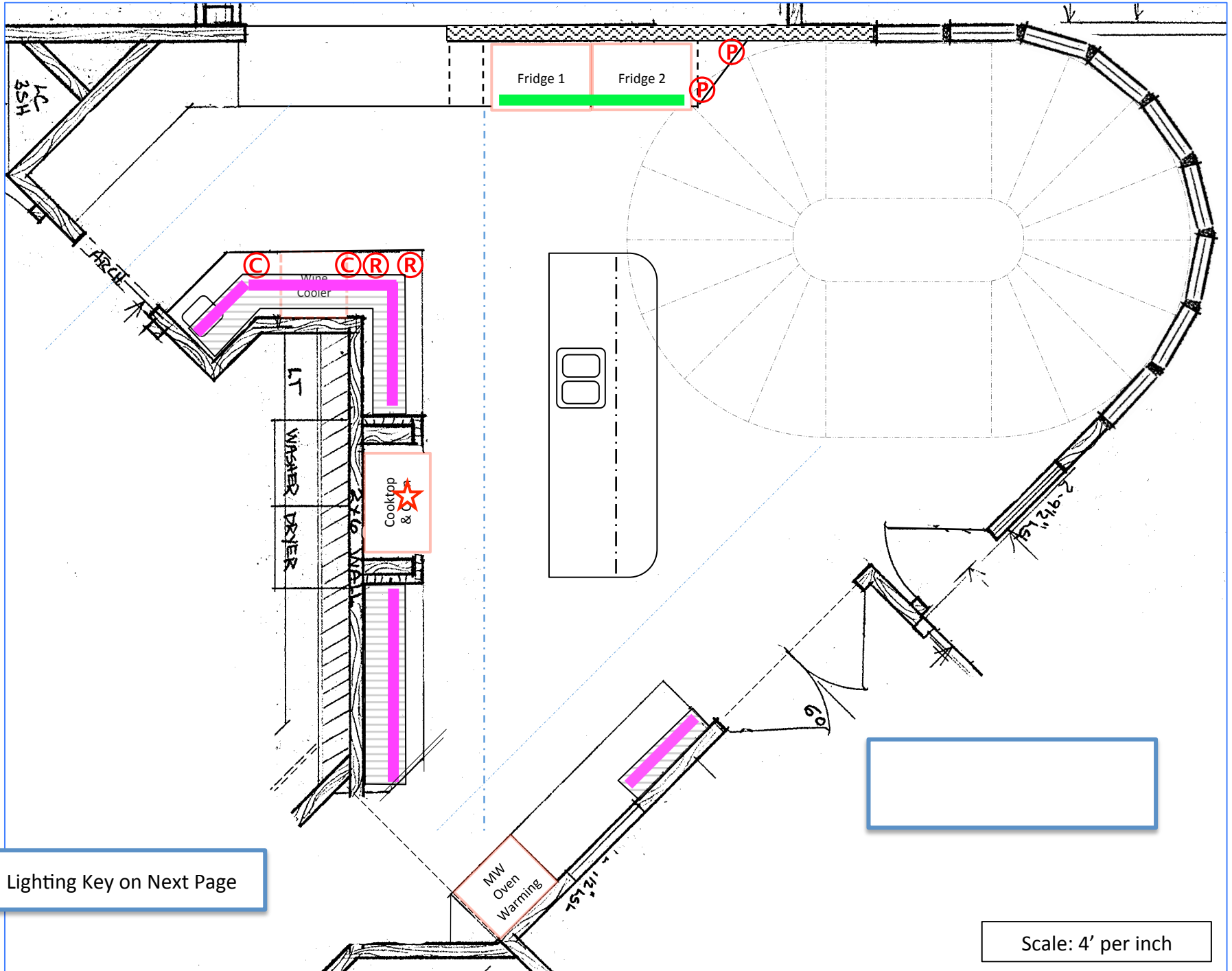


Lighting Key on Next Page

Vaulted Ceiling
And
Crown Lighting

Scale: 4' per inch


Lighting Fixtures 2






Lighting Key on Next Page


Scale: 4' per inch


Lighting Fixtures 3

 = Upper Crown Lighting (2D-T109)
(15 lineal ft) (24 VDC LED Tape)


 = Lower Crown Lighting (2D-T03)
(15 lineal ft) (24 VDC LED Tape)


 }
 } Cabinet Light P (2D-T09) (24 Vdc LV LED)
Circuit: 2D-T09; Cable: 2D-T09

 = Cabinet Light C (2D-T09a) (24 Vdc LV LED)
(Vertical LED Tape)

 = Cabinet Light R (2D-T09b) (24 Vdc LV LED)
(Vertical LED Tape)

} Shared Dimmer


 = 4" LED Recessed (2D-01)


 = Counter Lighting (2D-T02) (~18 lineal ft.) 24 Vdc (LV LED)


 = 6" LED Recessed (2D-03)


 = 6" LED Recessed (2D-04)


 = 6" LED Recessed (2D-05)

 = 6" Slope Incand Recessed (2D-06)


 = Pendant (2D-07)

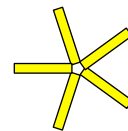
 = Fan Light (2D-08)

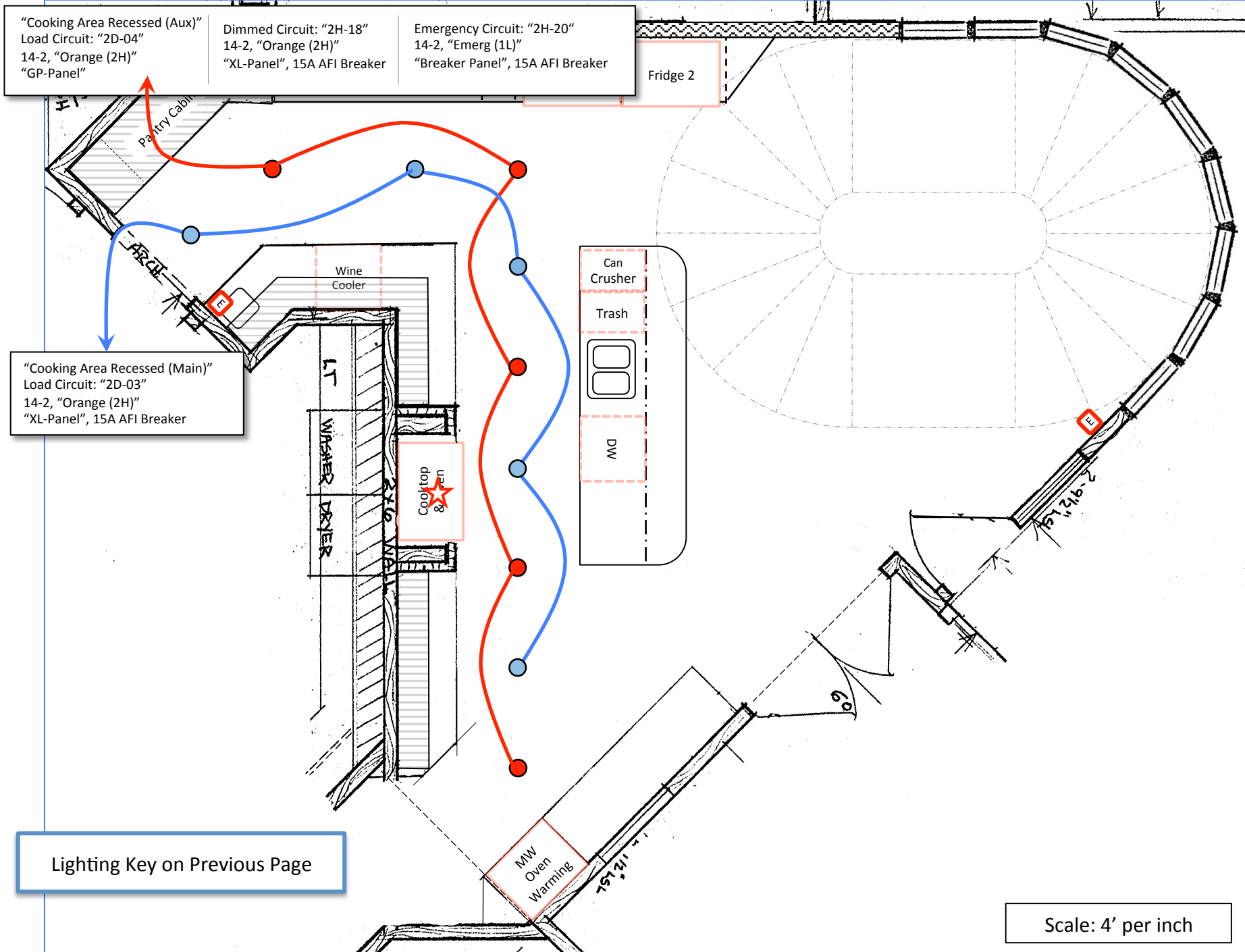
 = Vaulted Ceiling Lighting (2D-T32) (~24 lineal ft.) 24 Vdc (LV LED)

 = Vaulted Ceiling Lighting (2D-T33) (~18 lineal ft.) 24 Vdc (LV LED)

 = Standby Light

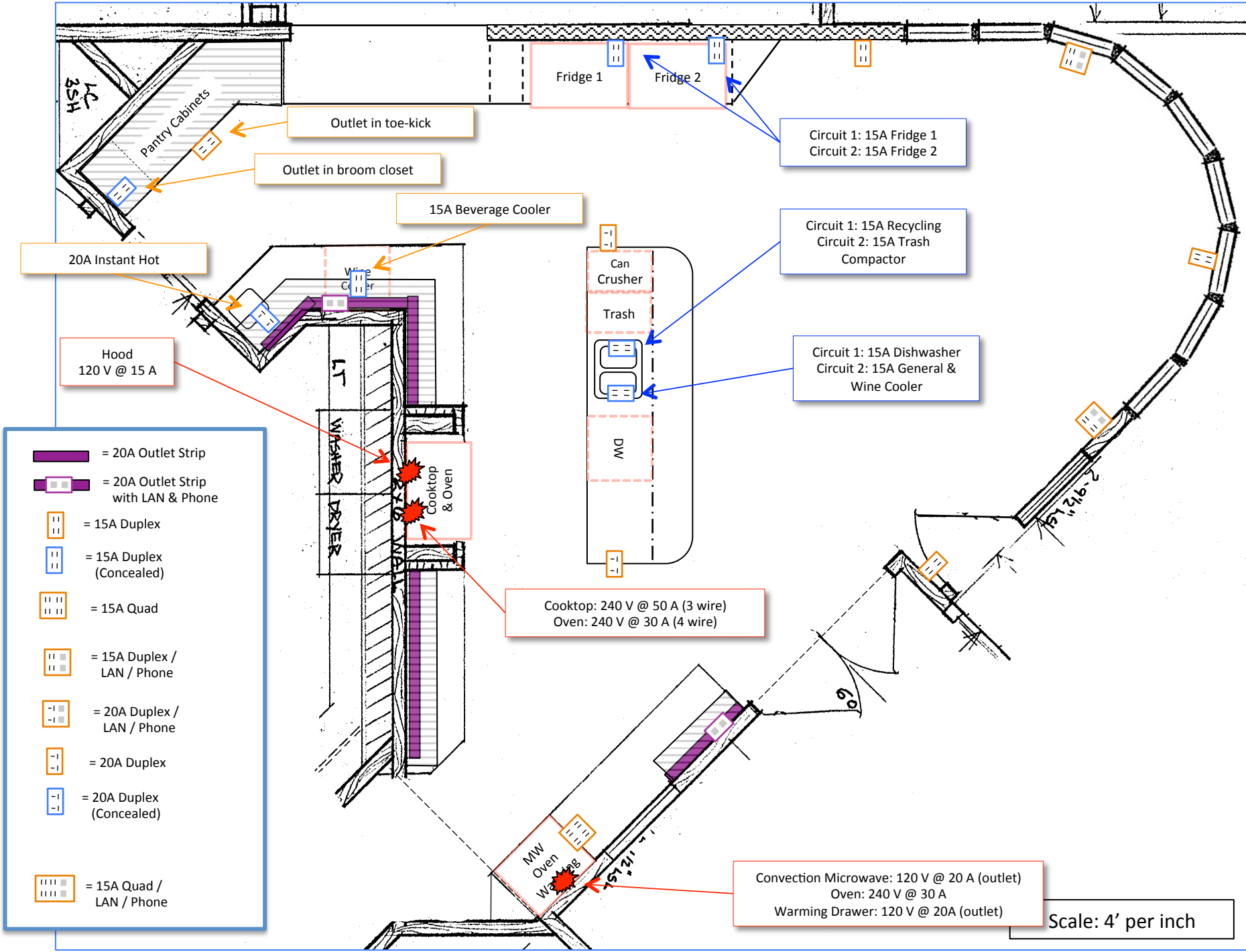
 = Hood Light (2D-19)

 = 48" Ceiling Fan (2D-11)



Lighting Power

Lighting Key on Previous Page

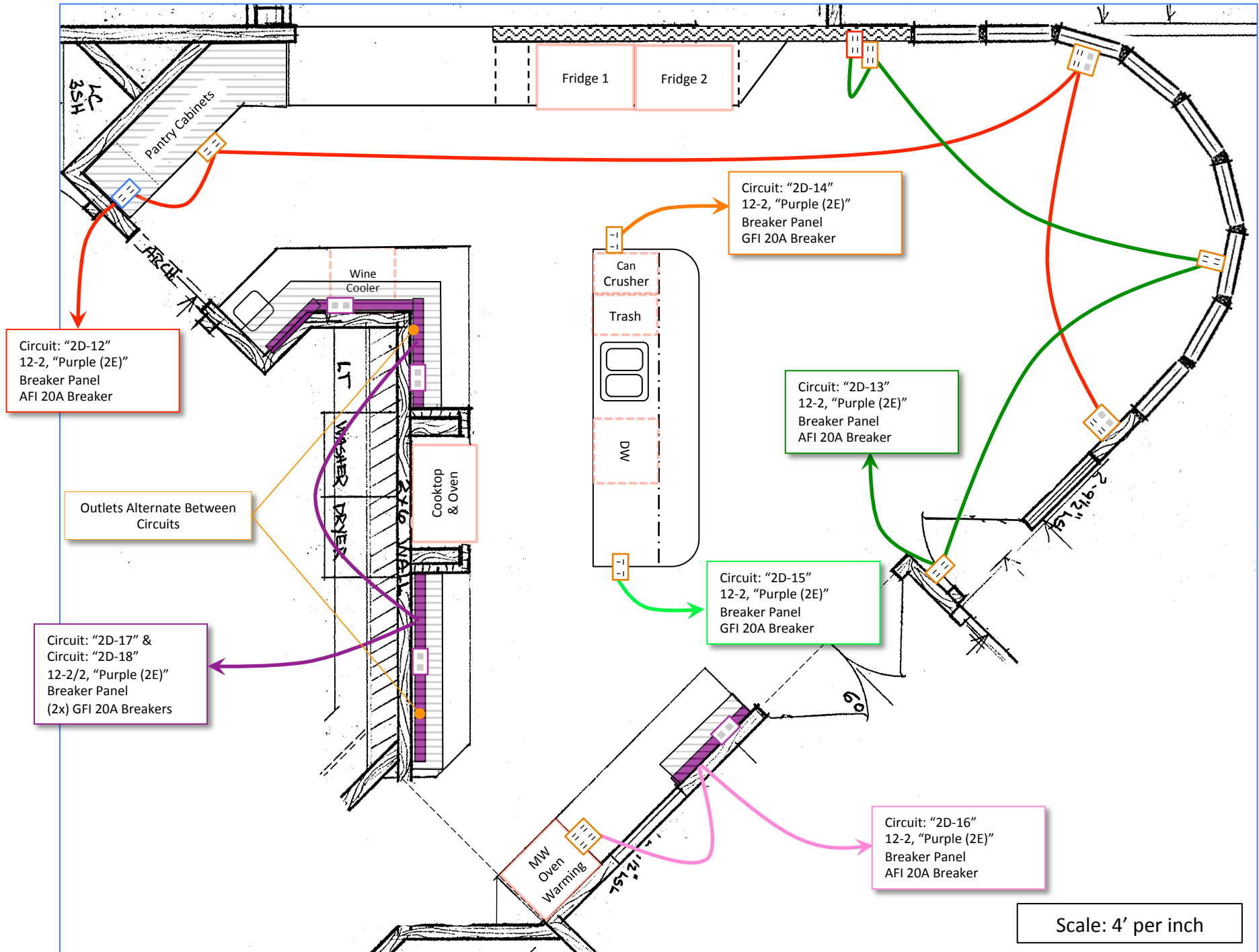


- = 20A Outlet Strip
- = 20A Outlet Strip with LAN & Phone
- = 15A Duplex
- = 15A Duplex (Concealed)
- = 15A Quad
- = 15A Duplex / LAN / Phone
- = 20A Duplex / LAN / Phone
- = 20A Duplex
- = 20A Duplex (Concealed)
- = 15A Quad / LAN / Phone

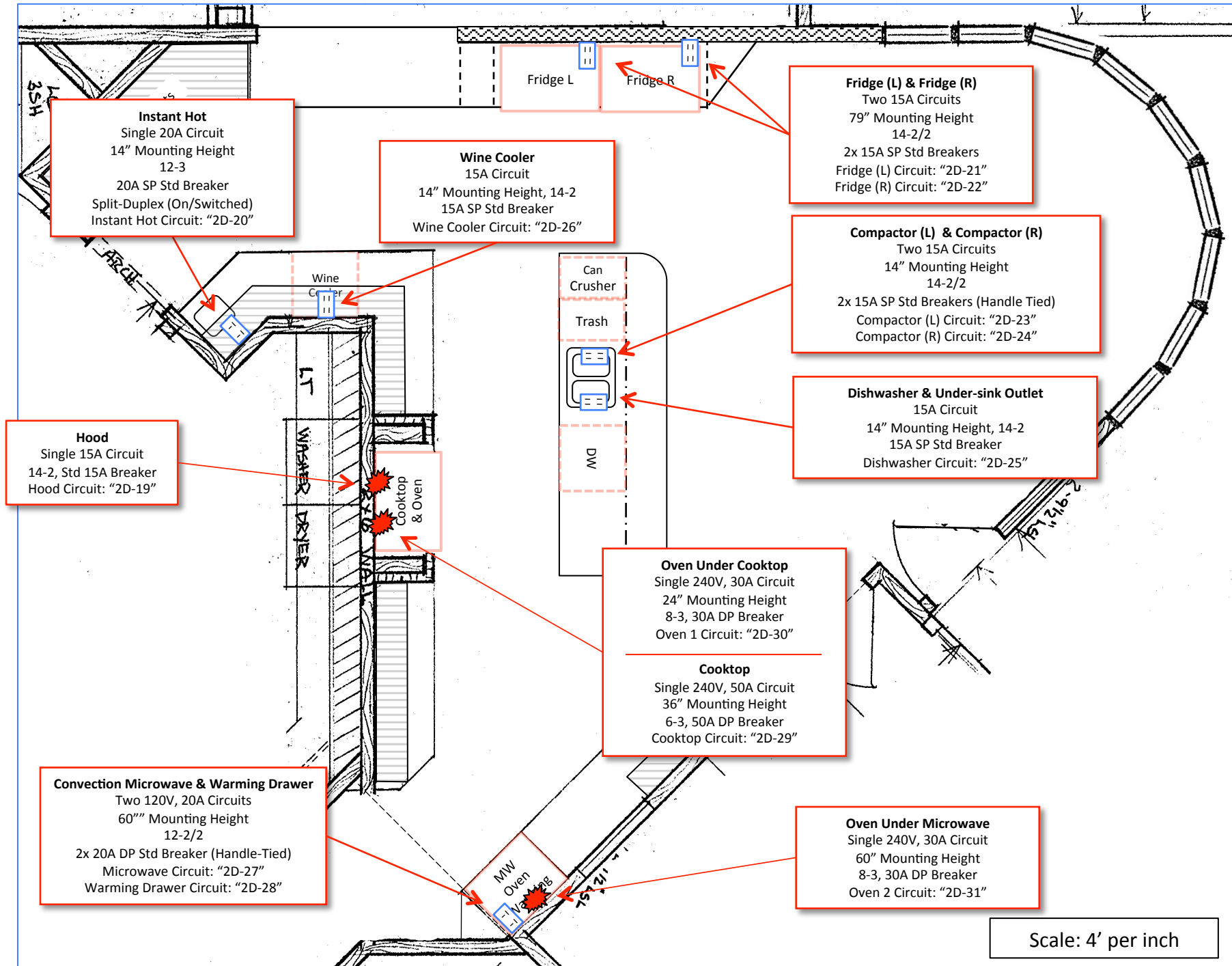
Convection Microwave: 120 V @ 20 A (outlet)
 Oven: 240 V @ 30 A
 Warming Drawer: 120 V @ 20A (outlet)

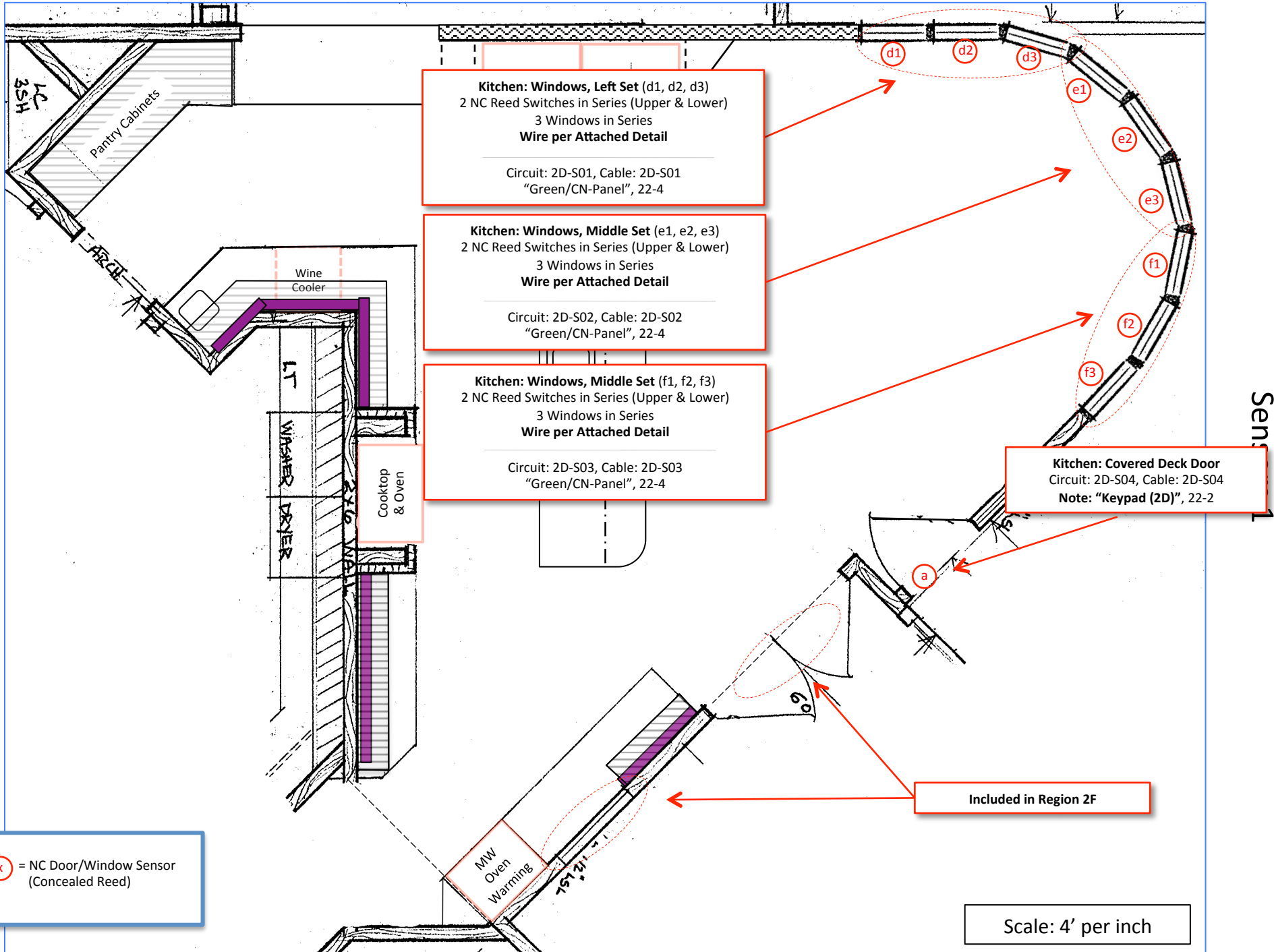
Scale: 4' per inch

Power



Power Wiring 1





Kitchen: Windows, Left Set (d1, d2, d3)
 2 NC Reed Switches in Series (Upper & Lower)
 3 Windows in Series
Wire per Attached Detail

Circuit: 2D-S01, Cable: 2D-S01
 "Green/CN-Panel", 22-4

Kitchen: Windows, Middle Set (e1, e2, e3)
 2 NC Reed Switches in Series (Upper & Lower)
 3 Windows in Series
Wire per Attached Detail

Circuit: 2D-S02, Cable: 2D-S02
 "Green/CN-Panel", 22-4

Kitchen: Windows, Middle Set (f1, f2, f3)
 2 NC Reed Switches in Series (Upper & Lower)
 3 Windows in Series
Wire per Attached Detail

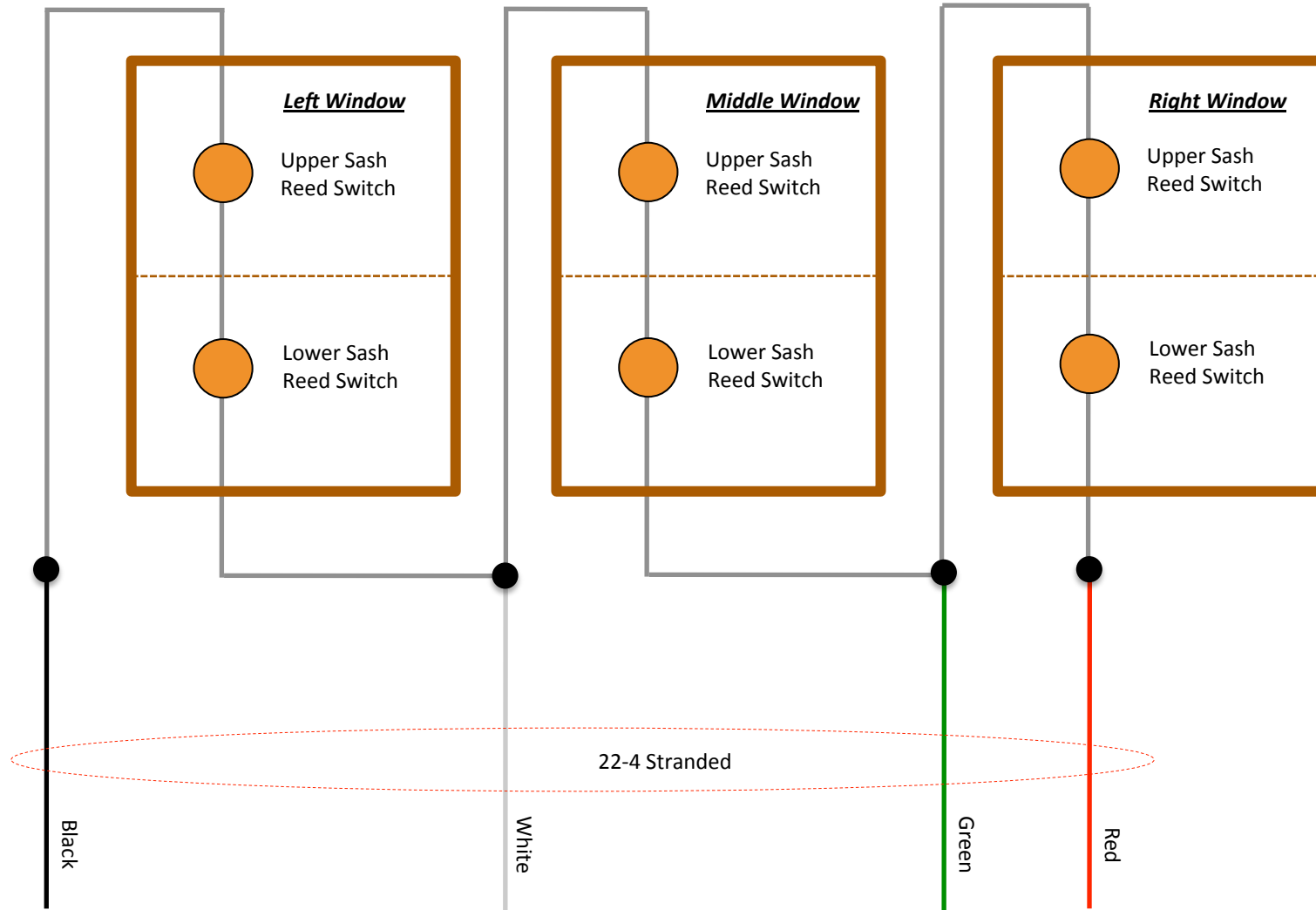
Circuit: 2D-S03, Cable: 2D-S03
 "Green/CN-Panel", 22-4

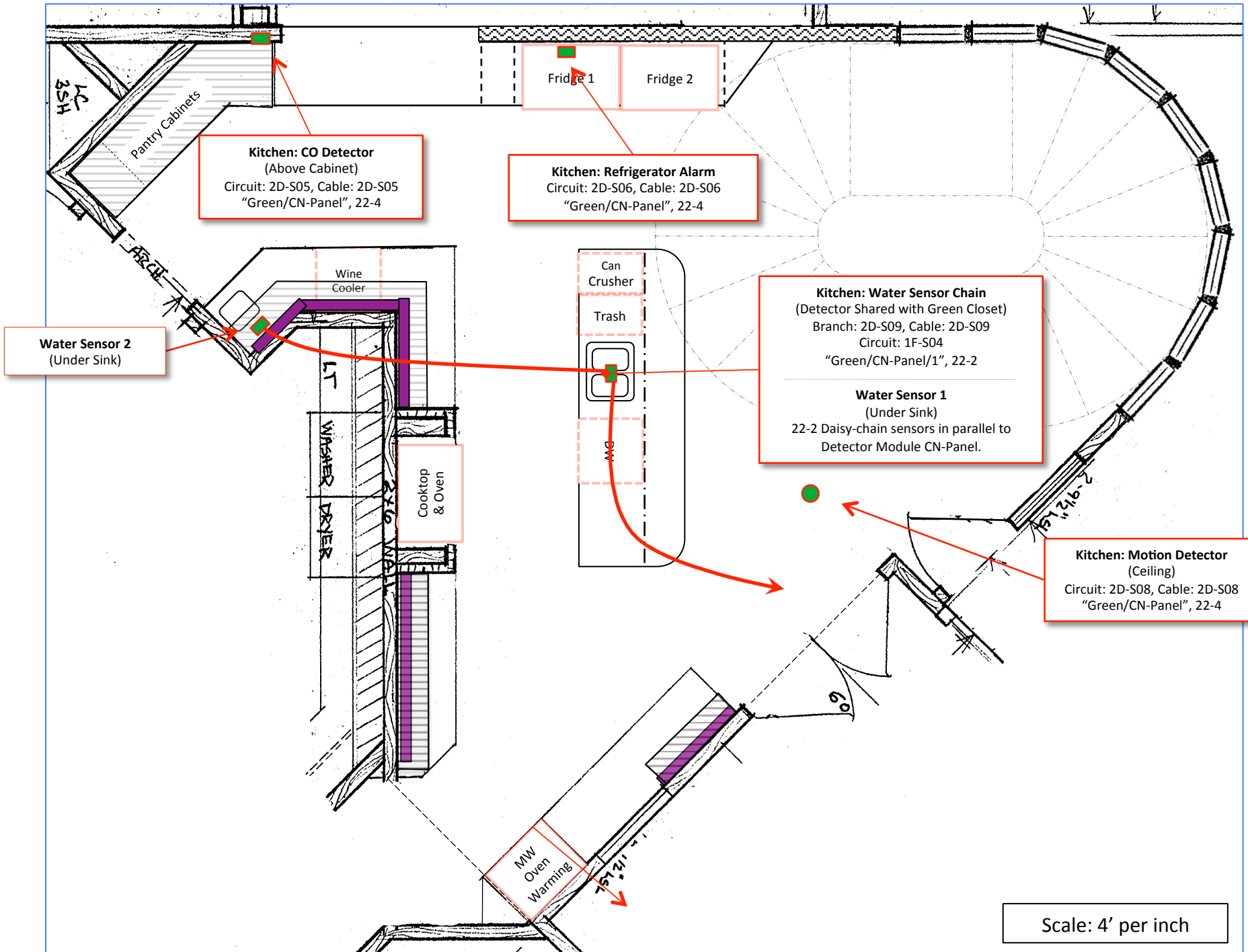
Kitchen: Covered Deck Door
 Circuit: 2D-S04, Cable: 2D-S04
 Note: "Keypad (2D)", 22-2

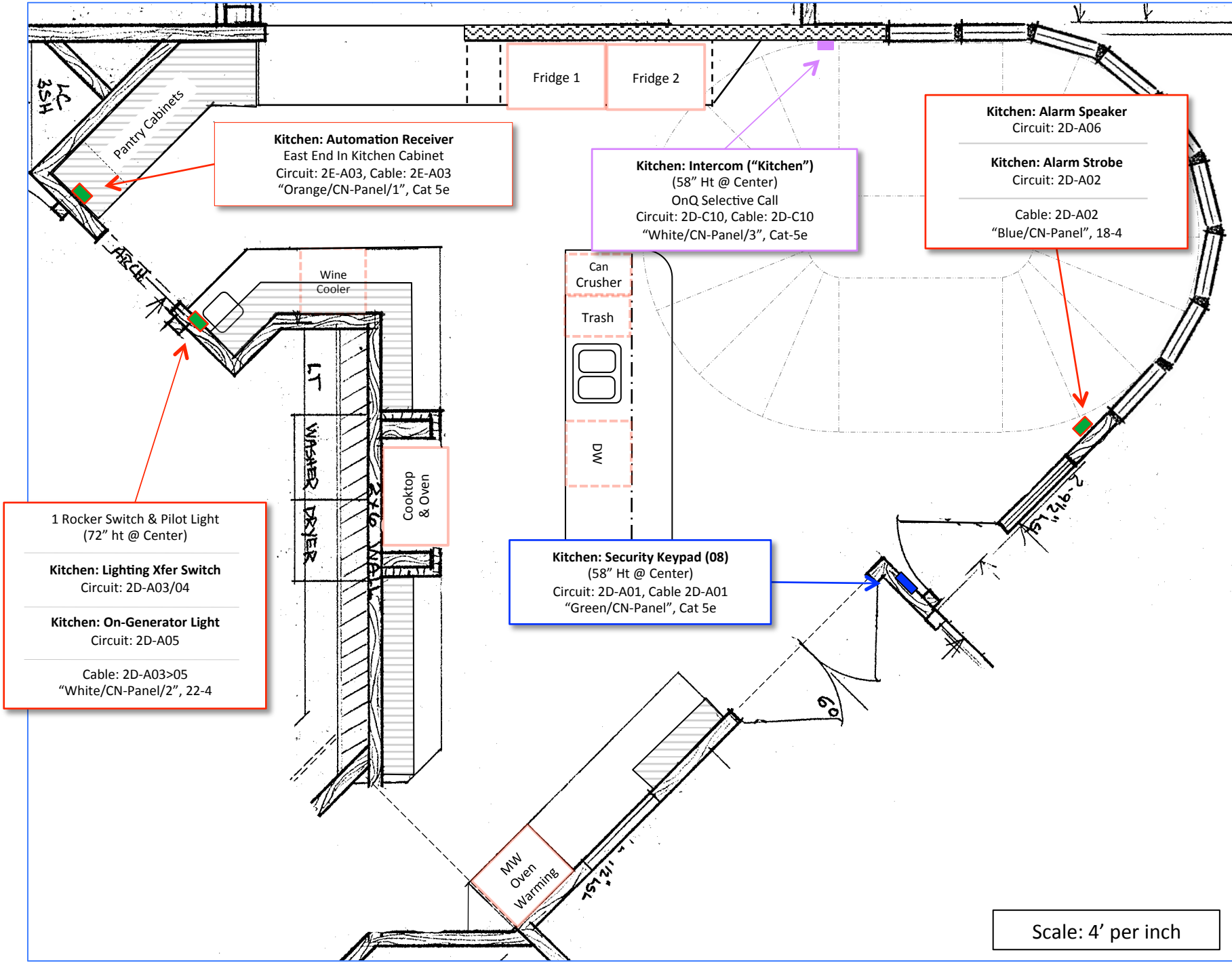
Included in Region 2F

(x) = NC Door/Window Sensor
 (Concealed Reed)

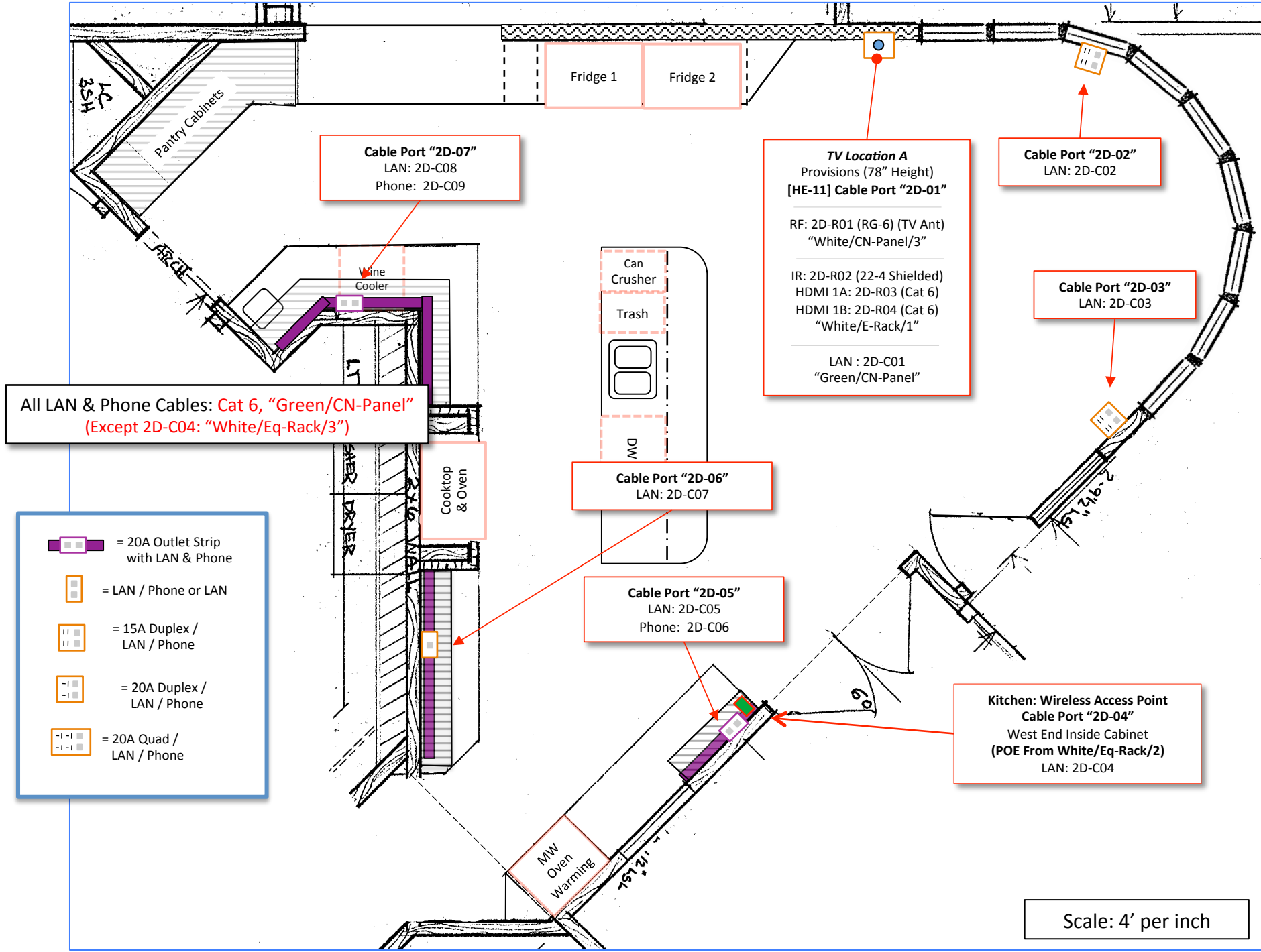
Scale: 4' per inch












Systems

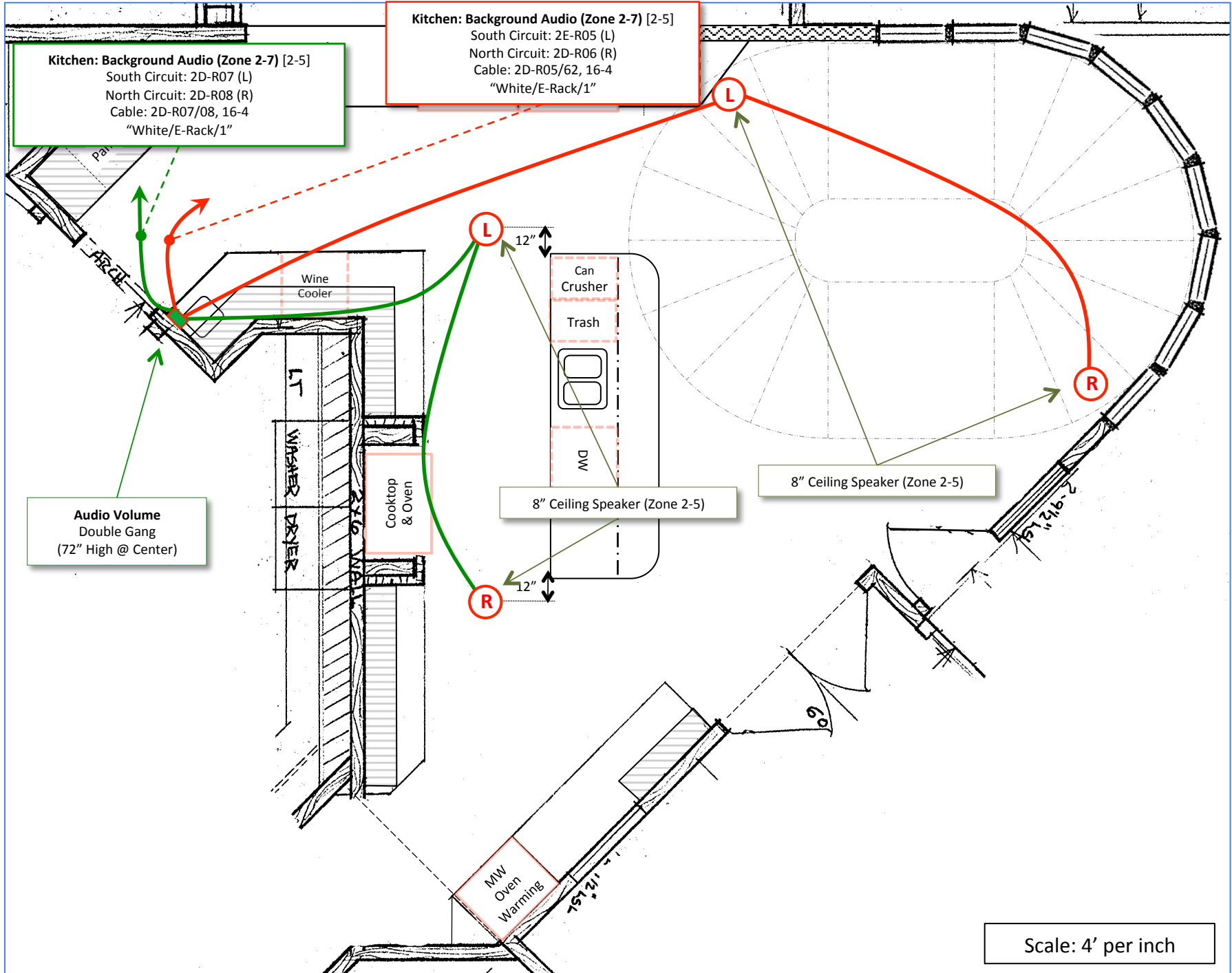


Communications

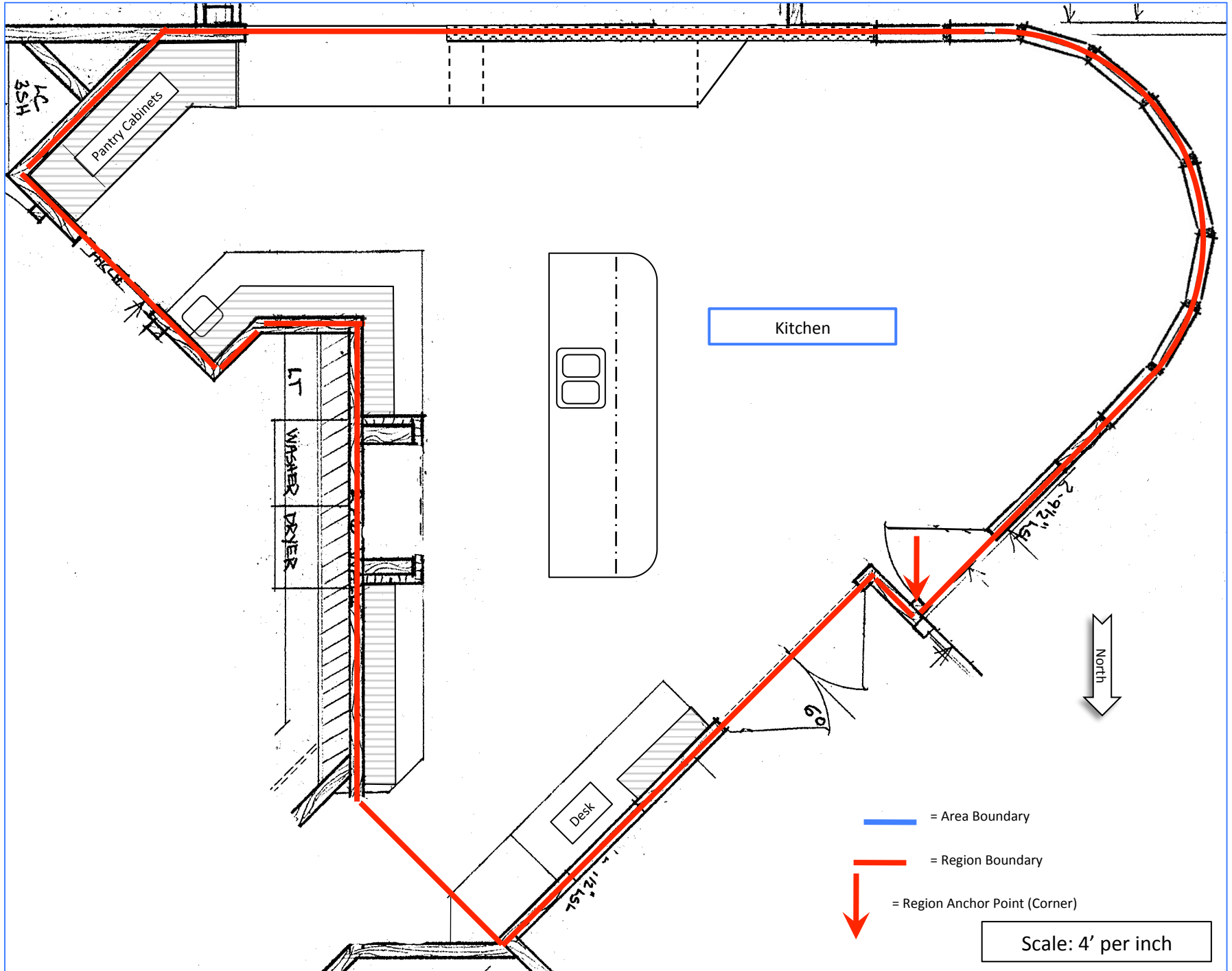
All LAN & Phone Cables: Cat 6, "Green/CN-Panel"
(Except 2D-C04: "White/Eq-Rack/3")

-  = 20A Outlet Strip with LAN & Phone
-  = LAN / Phone or LAN
-  = 15A Duplex / LAN / Phone
-  = 20A Duplex / LAN / Phone
-  = 20A Quad / LAN / Phone

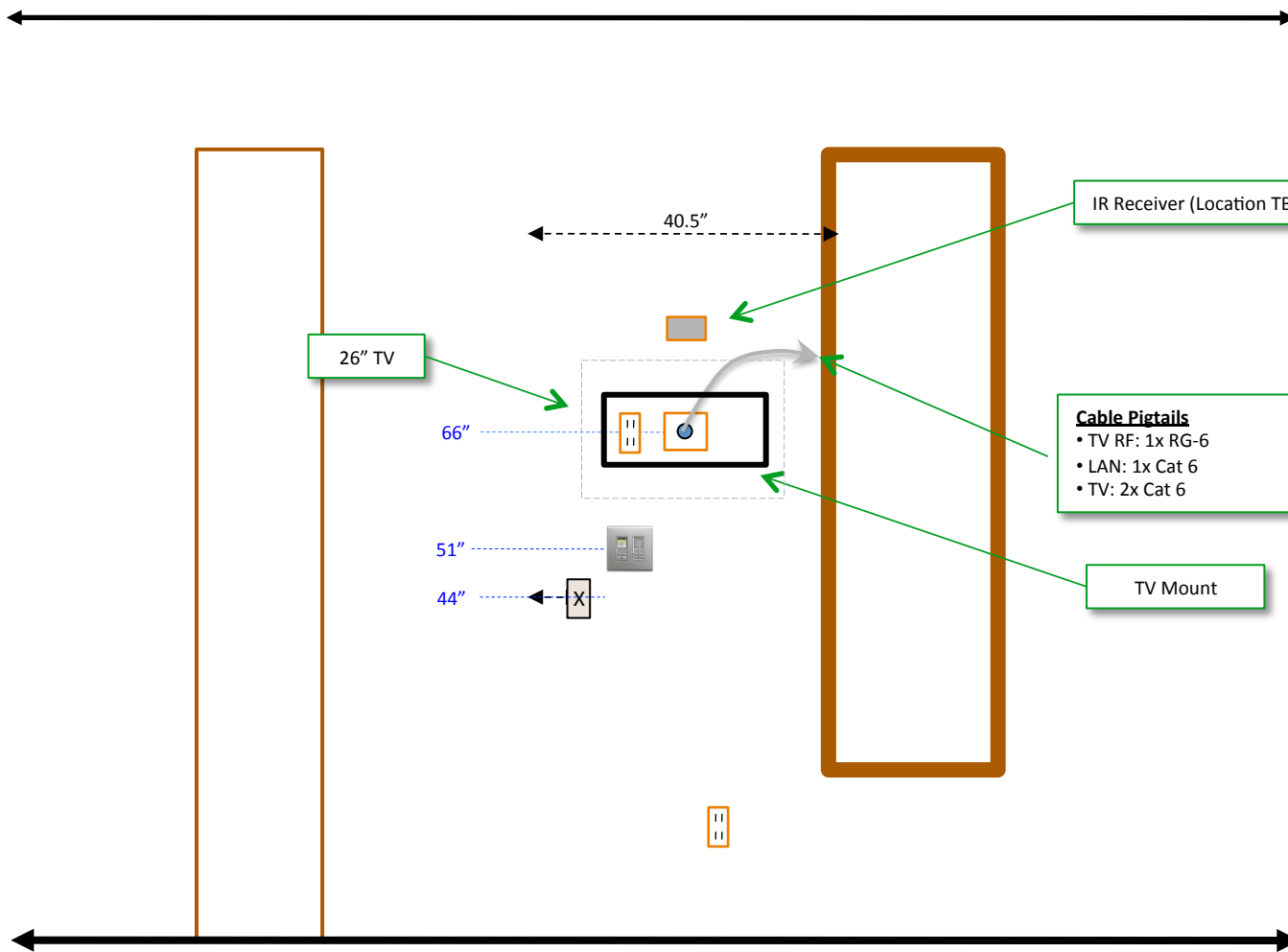
Scale: 4' per inch



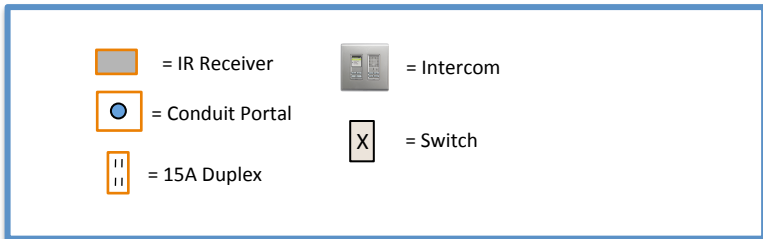
Audio



Region Overview



TV Location A Detail



Scale: 2' per inch

Appliance	Dimensions	Supply Circuit	Make	Model
Refrigerator	84" H x 36" W x 24" D	120 V @ 15 A (outlet)	Sub-Zero	BI-36U
Cooktop	3.5" H x 36" W x 21" D	240 V @ 50 A (3 Wire)	Wolf	36" Induction Model CT36I/S
Vent Hood Liner		120V @ 15A	Wolf	40" Wide PL402212 900 CFM Remote Blower
Oven (Main)	24.5" H x 35.5 W x 24" D	240 V @ 30 A (4 Wire)	Wolf	36" L Series Unframed
Microwave	19" H x 27.5" W x 20" D	120 V @ 15/20 A (outlet)	Wolf	30" Convection MW
Oven (North)	27.5" H x 30" W x 24" D	240 V @ 30 A (4 Wire)	Wolf	30" L Series
Warming Drawer	9" H x 29" W x 24" D	120 V @ 20A (outlet)	Wolf	30"
Trash Compactor	34" H x 15" W x 24" D	120 V @ 15A (outlet)	KitchenAid	
Dishwasher	34" H x 24" W x 24" D	120 V @ 15/20 A (outlet)	KitchenAid	KUDH03DT
Wine Cooler	34" H x 24" W x 24" D	120 V @ 15 A (outlet)	Sub-Zero	424
Instant Hot		120V @ 15 A (Outlet) 1500W	Insinkerator	W152

Sample Appliances

